

Terminal markers

Terminal markers	Introduction	B.2
	Selection table – terminal markers	B.3
	DEK card	B.6
	DEK MultiCard	B.10
	WS / ZS	B.12
	MultiFit for use with other makes of terminals	B.16
	Cross-reference table	B.20
	Terminal marker WAD	B.34
	Tag carrier	B.35

Terminal markers

Weidmüller's multitude of different terminal markers enable users to solve virtually every labelling task of all types of wire and cable connectors. Whether multi-character labelling, ready-to-use markers with standard printing or individual, custom markers, whether white or coloured or group designations at terminals, the comprehensive range of Weidmüller products solves every marking task simply, quickly and clearly.

The tables on the following pages show which markers fit the various terminal series. The terminal pitch governs the selection of a marker. For example, a WDU 2.5 terminal has a pitch of 5 mm, the WS 12/5 marker is 12 mm long and suitable for a 5 mm pitch.

Whole blocks of terminals can be marked as a strip using the Weidmüller system. When a terminal with a larger pitch has to be marked (e.g. WDU 16), a smaller marker (e.g. WS 12/5) can be clipped onto it. Most of the markers are compatible with each other.

The two traditional marker series, DEK and WS, are available as ready-to-use markers. And these markers are also available in the MultiCard format for printing by users themselves.

MultiCards can be printed on with the innovative PrintJet, Smark Laser, Plotter MCP Plus or MC-Mobilo printing systems, using M-Print PRO® software.

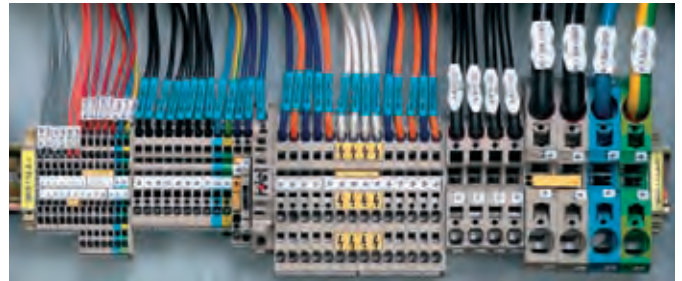
To see a small selection of the Weidmüller markers, order our bag of samples, order No. **1646670000**.

Owing to the sheer number of possible applications and environmental influences such as moisture, radiation, gases or heat/cold to which the products can be exposed, Weidmüller accepts no liability for the suitability of products in all customer applications. Suitability tests for specific applications must therefore be carried out by the customer. However, Weidmüller will be happy to provide help and advice upon request.

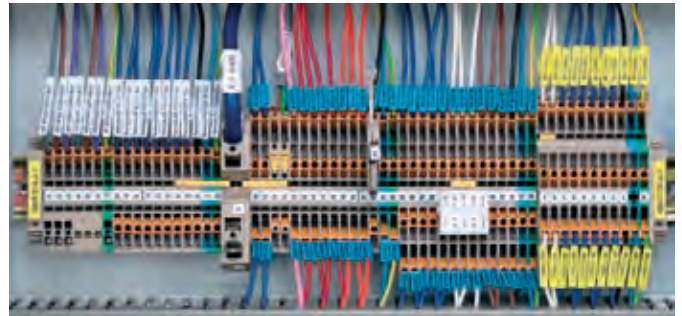
W series



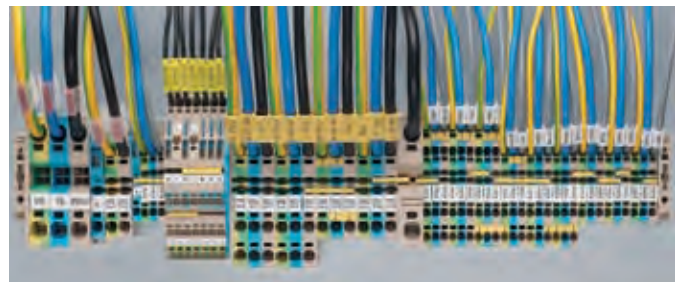
Z series



I series



P series



Due to the different identification system available on the market, we wish to point out that Weidmüller does not guarantee industrial identification products if the Weidmüller components (markers – transparent sleeves – ink/toner/colour ink ribbons – printing systems) are combined with third-party products, unless Weidmüller has explicitly agreed for the purpose of an individual application.

Selection table

Designation	Terminal width	DEK	WS	ZS	SchT 7	SchT 9/4	SchT 14/6	WTS 3/4	WGB 5 / WAD 5	WGB 8 / WAD 8	WAD 12	WAD 27	ZGB 15 / ZGB 30	BZT 1	BZT 2	EM 8/30	Other
ADK 1	6	6	-	-	-	-	-	-	-	-	-	-	-	-	-	-	-
AKA 4	6	6	-	-	-	-	-	-	-	-	-	-	-	-	-	-	-
AKE 2.5/AKZ 2.5...	5	5	-	-	-	-	-	-	-	-	-	-	-	-	-	-	-
AKE 2.5	5.1	5	-	-	-	-	-	-	-	-	-	-	-	-	-	-	-
AKE 4	7	6.5	-	-	-	-	-	-	-	-	-	-	-	-	-	-	-
AKZ 1.5...	5	5	-	-	-	-	-	-	-	-	-	-	-	-	-	-	-
AKZ 1.5-2.5	5.1	5	-	-	-	-	-	-	-	-	-	-	-	-	-	-	-
AKZ 4	6.1	6	-	-	-	-	-	-	-	-	-	-	-	-	-	-	-
AKZ 4.../AKB 4...	6	6	8/5	-	-	x	-	-	-	-	-	-	-	-	-	-	-
AL 1	6.5	6.5	-	-	-	-	-	-	-	-	-	-	-	-	-	-	-
ASK 1	8	8	-	-	x	-	-	-	-	-	-	-	-	-	-	-	-
AST 1-4/35	6.2	6	-	-	-	-	-	-	-	-	-	-	-	-	-	-	-
AST 5/35	6.5	6	-	-	-	-	-	-	-	-	-	-	-	-	-	-	-
BZT ZVL 1.5	5.08	5	12/5	-	-	-	-	-	-	-	-	-	-	-	-	-	-
DK 4...	6	6	-	-	-	-	-	-	-	-	-	-	-	-	-	-	-
DKT 4...	6	6	-	-	-	-	-	-	-	-	-	-	-	-	-	-	-
DLA 2.5...	6	6	8/5	-	x	x	x	-	-	-	-	-	-	-	-	-	-
DLD 2.5...	6	6	8/5	-	x	x	x	-	-	-	-	-	-	-	-	-	-
DLI 2.5	6	6	8/5	-	x	x	x	-	-	-	-	-	-	-	-	-	-
EK 10	10	5	-	-	-	-	-	-	-	-	-	-	-	-	-	-	-
EK 16	12	5	-	-	-	-	-	-	-	-	-	-	-	-	-	-	-
EK 2.5...	6	6	-	-	-	-	-	-	-	-	-	-	-	-	-	-	-
EK 35...	16	5	-	-	-	-	-	-	-	-	-	-	-	-	-	-	-
EK 4...	6.5	6.5	-	-	-	-	-	-	-	-	-	-	-	-	-	-	-
EK 6/35	8	8	-	-	-	-	-	-	-	-	-	-	-	-	-	-	-
EW 15	9.5	5	12/5	-	x	x	-	x	-	-	-	-	-	-	-	-	-
EW 15/2	8	5	-	-	-	-	-	-	-	-	-	-	-	-	-	-	-
EW 35	8.5	5	8/5	-	-	-	-	x	-	-	-	-	-	-	-	-	-
EWK	8.5	5	8/5	-	-	-	-	-	-	-	-	-	-	-	-	-	-
EWK 1	8.5	5	8/5	-	-	-	-	x	-	-	-	-	-	-	-	-	-
EWK 2	8.5	5	8/5	-	-	-	-	-	-	-	-	-	-	-	-	-	-
IAK 1.5N 3L	5	5	10/5 ²⁾	10/5	-	-	-	-	-	-	-	-	x	-	-	-	-
IDK 1.5N	5	5	10/5 ²⁾	10/5	-	x ³⁾	-	-	-	-	-	-	-	-	-	-	-
IDK 1.5N/V	5	5	10/5 ²⁾	10/5	-	-	-	-	-	-	-	-	x	-	-	-	-
IDU 1.5 N ...	5	5	10/5 ²⁾	10/5	-	-	-	-	-	-	-	-	x	-	-	-	-
IEK 1.5N...	5	5	10/5 ²⁾	10/5	-	-	-	-	-	-	-	-	x	-	-	-	-
IHK 1.5N...	5	5	10/5 ²⁾	10/5	-	-	-	-	-	-	-	-	x	-	-	-	-
IPE 1.5N...	5	5	10/5 ²⁾	10/5	-	-	-	-	-	-	-	-	x	-	-	-	-
ITR 1.5N...	5	5	10/5 ²⁾	10/5	-	-	-	-	-	-	-	-	x	-	-	-	-
KDKS 1...	8	8	-	-	-	-	-	-	-	-	-	-	-	-	-	-	-
KMVF...	6	5	-	-	-	-	-	-	-	-	-	-	-	-	-	-	-
KSKM...	13	5	-	-	-	-	-	-	-	-	-	-	-	-	-	-	-
KST...	24-34	5	-	-	-	-	-	-	-	-	-	-	-	-	-	-	-
MAK 2.5/VLI 1.5...	6	6	8/5	-	x	x	x	-	-	-	-	-	x	-	-	-	-
NT...	6-12	6	-	-	-	-	-	-	-	-	-	-	-	-	-	-	-
PDK 2.5/4	5	5	12/5	-	-	-	-	-	-	-	-	-	-	-	-	-	-
PDL 4...	5	5	12/5	-	-	-	-	-	-	-	-	-	-	-	-	-	-
PDU 16	12	-	10/12	-	-	-	-	-	-	-	-	-	-	-	-	-	-
PDU 2.5/4...	5	5	12/5	-	-	-	-	-	-	-	-	-	-	-	-	-	-
PDU 6/10...	8	8	10/8	-	-	-	-	-	-	-	-	-	-	-	-	-	-
PEI 16	12	-	10/12	-	-	-	-	-	-	-	-	-	-	-	-	-	-
PNT 16	12	-	10/12	-	-	-	-	-	-	-	-	-	-	-	-	-	-
PNT 2.5/4	5	5	12/5	-	-	-	-	-	-	-	-	-	-	-	-	-	-
PNT 6/10	8	8	10/8	-	-	-	-	-	-	-	-	-	-	-	-	-	-
PPE 16	12	-	10/12	-	-	-	-	-	-	-	-	-	-	-	-	-	-
PPE 2.5/4	5	5	12/5	-	-	-	-	-	-	-	-	-	-	-	-	-	-
PPE 6/10	8	8	10/8	-	-	-	-	-	-	-	-	-	-	-	-	-	-
PTR 2.5/4...	5.1	5/5	10/5	-	-	-	-	-	-	-	-	-	-	-	-	-	-
RSF 1-3...	8	5	-	-	-	-	-	-	-	-	-	-	-	-	-	-	-
SAK 10...	10	5	-	-	-	-	-	-	-	-	-	-	-	-	-	-	-
SAK 16...	12	5	-	-	-	-	-	-	-	-	-	-	-	-	-	-	-
SAK 2.5	6.1	6	-	-	x	-	-	-	-	-	-	-	-	-	-	-	-
SAK 2.5/35	5	5	-	-	x	-	-	-	-	-	-	-	-	-	-	-	-
SAK 35...	18	5	-	-	x	-	-	-	-	-	-	-	-	-	-	-	-
SAK 4...	6.5	6.5	-	-	x	-	-	-	-	-	-	-	-	-	-	-	-
SAK 6...	8	8	-	-	x	-	-	-	-	-	-	-	-	-	-	-	-
SAK 95/35	28	5	-	-	x	-	-	-	-	-	-	-	-	-	-	-	-
SAKA 10	12	5	-	-	x	-	-	-	-	-	-	-	-	-	-	-	-
SAKB 10	10	5	-	-	x	-	-	-	-	-	-	-	-	-	-	-	-
SAKC 10/35	12	6.5	-	-	x	-	-	-	-	-	-	-	-	-	-	-	-
SAKC 4/35	6.5	6.5	-	-	x	-	-	-	-	-	-	-	-	-	-	-	-
SAKD 2.5N	5	5	-	-	x	-	-	-	-	-	-	-	-	-	-	-	-
SAKG...	32-54	5	-	-	x	-	-	-	-	-	-	-	-	-	-	-	-
SAKH 35	18	6.5	-	-	-	-	-	-	-	-	-	-	-	-	-	-	-
SAKH 4-10	6.5-14	5	-	-	x	-	-	-	-	-	-	-	-	-	-	-	-
SAKK 10..	11.5	5	-	-	x	-	-	-	-	-	-	-	-	-	-	-	-
SAKK 4..	8	6.5	-	-	x	-	-	-	-	-	-	-	-	-	-	-	-
SAKR...	6.5	6.5	-	-	x	-	-	-	-	-	-	-	-	-	-	-	-
SAKS....	13-28	5	-	-	x	-	-	-	-	-	-	-	-	-	-	-	-
SAKT...	8	6.5	-	-	x	-	-	-	-	-	-	-	-	-	-	-	-
VWKG 4...	10	5/5	12/6.5	-	-	-	-	-	-	-	-	-	-	-	-	-	-
VWKG 6...	10	5/5	12/6.5	-	-	-	-	-	-	-	-	-	-	-	-	-	-
WDK 1.5/R 3.5...	3.5	3.5	-	-	-	-	-	-	-	-	-	-	-	-	-	-	-

1) = WS 10/6 Middle; 2) = WS 10/5 Middle; 3) = SnapMark

Selection table – terminal markers

Terminal markers

B

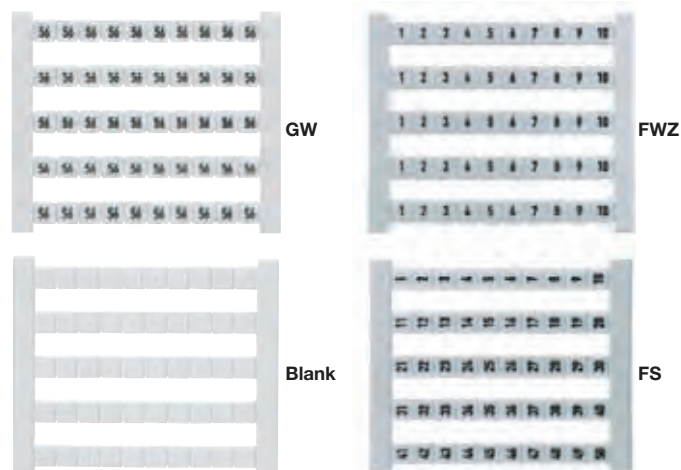
Designation	Terminal width	DEK	WS	ZS	SchT 7	SchT 9/4	SchT 14/6	WTS 3/4	WGB 5 / WAD 5	WGB 8 / WAD 8	WAD 12	WAD 27	ZGB 15 / ZGB 30	BZT 1	BZT 2	EM 8/30	Other
WDK 2.5 ...	5	5	8/5	-	-	x	-	-	-	-	-	-	x	-	-	-	-
WDK 2.5 800V	6	6	8/5	-	-	x	-	-	-	-	-	-	x	-	-	-	-
WDK 2.5/BLA R5.08	5.08	5	8/5	-	-	-	-	x	-	-	-	-	-	-	-	-	-
WDK 2.5/BLZ R5.08	5.08	5	8/5	-	-	-	-	x	-	-	-	-	-	-	-	-	-
WDK 2.5N...	5	5	8/5	-	-	-	-	-	-	-	-	-	-	-	-	-	-
WDK 4N...	5	5	8/5	-	-	-	-	-	-	-	-	-	-	-	-	-	-
WDL 2.5/...	6	6	8/5	-	-	-	-	x	-	-	-	-	x	-	-	-	-
WDT 1.5	6.5	6.5	8/5	-	-	-	-	-	-	-	-	-	-	-	-	-	-
WDTR 2.5...	6.2	6	8/5	-	-	x	-	-	-	-	-	-	-	-	-	-	-
WDU (WPE) 120/150	32	5	10/5	-	-	-	-	x	-	-	-	x	-	-	-	-	-
WDU (WPE) 35 N	16	5	12/5	-	x	x	x	x	-	-	-	-	x	-	-	-	-
WDU (WPE) 70/95	27	5	12/5	-	-	-	-	x	-	-	-	x	-	-	-	-	-
WDU (WPE) 70N	20.5	5	12/5	-	x	x	x	x	-	-	-	-	x	-	-	-	-
WDU 1.5 LD/BLA	5.08	5	12/5	-	x	x	x	x	-	-	-	-	x	-	-	-	-
WDU 1.5/BLA	5.08	5	12/5	-	x	x	x	x	-	-	-	-	x	-	-	-	-
WDU 1.5/BLZ R7.62	7.62	5	-	-	-	-	-	-	-	-	-	-	x	-	-	-	-
WDU 1.5/BLZ/5.08	5.08	5	12/5	-	x	x	x	x	-	-	-	-	x	-	-	-	-
WDU 1.5/BLZ/LD/5.08	5.08	5	12/5	-	x	x	x	x	-	-	-	-	x	-	-	-	-
WDU 1.5/R 3.5...	3.5	3.5	-	-	-	-	-	-	-	-	-	-	-	-	-	-	-
WDU 1.5/R/BLA	5.08	5	12/5	-	x	x	x	x	-	-	-	-	x	-	-	-	-
WDU 1.5/ZZ	5	5	12/5	-	x	x	x	x	-	-	-	-	x	-	-	-	-
WDU 10 SL	10	5	12/5	-	x	x	x	x	x	x	-	-	x	-	-	-	-
WDU 10...	10	5	12/5	-	x	x	x	x	x	x	-	-	x	-	-	-	-
WDU 16 (ZA)	12	5	12/5	-	x	x	x	x	-	-	x	-	x	-	-	-	-
WDU 16 N	12	5	12/5	-	x	x	x	x	-	-	-	-	x	-	-	-	-
WDU 2.5 F	5	5	12/5	-	-	-	-	x	-	-	-	-	-	-	-	-	-
WDU 2.5 FF	5	5	12/5	-	x	-	-	x	-	-	-	-	-	-	-	-	-
WDU 2.5 N (WDU 1.5)	5	5	12/5	-	x	x	x	x	-	-	-	-	x	-	-	-	-
WDU 2.5 TC...	5	5	12/5	-	x	x	-	x	-	-	-	-	x	-	-	-	-
WDU 2.5...	5	5	12/5	-	x	x	x	x	x	-	-	-	x	-	-	-	-
WDU 2.5/1.5/ZZ	5	5	12/5	-	x	x	x	x	-	-	-	-	x	-	-	-	-
WDU 2.5/BLZ R7.62	7.62	5	-	-	-	-	-	-	-	-	-	-	x	-	-	-	-
WDU 240...	36	5	12/5	-	-	-	-	-	-	-	-	-	-	-	-	-	-
WDU 35	16	5	12/5	-	x	x	x	x	-	-	x	-	x	-	-	-	-
WDU 4 ...	6	6	12/6	-	x	x	x	x	x	-	-	-	x	-	-	-	-
WDU 4N ...	6	6	12/6	-	x	x	x	x	-	-	-	-	x	-	-	-	-
WDU 50N	18.5	5	12/5	-	-	-	-	-	-	-	-	-	-	-	-	-	-
WDU 6 ...	8	8	12/8	-	x	x	x	x	x	x	-	-	x	-	-	-	-
WDU 95N	27	8	15/5	-	-	-	-	-	-	-	-	-	-	-	-	-	-
WDUL 4	6	6	12/6	-	x	x	x	x	x	-	-	-	x	-	-	-	-
WEW 32/1	12.2	5	12/5	-	x	x	x	x	-	-	-	x	x	-	-	-	-
WEW 35/1	12.2	5	12/5	-	x	x	x	x	-	-	-	-	-	-	-	-	-
WEW 35/2	8	8	12/5	-	x	x	x	x	x	x	-	-	-	-	-	x	-
WF 10...	35.6	6	15/5	-	-	-	-	-	-	-	-	-	-	-	-	-	-
WF 12...	35.6	6	15/5	-	-	-	-	-	-	-	-	-	-	-	-	-	-
WF 5...	13	6	15/5	-	-	-	-	-	-	-	-	-	-	-	-	-	-
WF 6...	19.6	6	15/5	-	-	-	-	-	-	-	-	-	-	-	-	-	-
WF 8...	24.6	6	15/5	-	-	-	-	-	-	-	-	-	-	-	-	-	-
WFF 120...	42	5	12/6.5	-	-	-	-	-	-	-	-	-	-	-	-	-	-
WFF 185...	55	5	12/6.5	-	-	-	-	-	-	-	-	-	-	-	-	-	-
WFF 300...	55	5	12/6.5	-	-	-	-	-	-	-	-	-	-	-	-	-	-
WFF 35...	27	5	12/5	-	-	-	-	-	-	-	-	-	-	-	-	-	-
WFF 70...	32	5	12/6.5	-	-	-	-	-	-	-	-	-	-	-	-	-	-
WGK 10.../WGKV 10...	10.1	5/5	12/6.5	-	-	-	-	-	-	-	-	-	-	-	-	-	-
WGK 16...	12.1	5/5	12/6.5	-	-	-	-	-	-	-	-	-	-	-	-	-	-
WGK 25.../WGKV 25...	15.1	5/5	12/6.5	-	-	-	-	-	-	-	-	-	-	-	-	-	-
WGK 4.../WGKV 4...	8.1	5/8	10/8	-	-	-	-	-	-	-	-	-	-	-	-	-	-
WGK 50...	18.8	6/5	-	-	-	-	-	-	-	-	-	-	-	-	-	-	-
WGK 95...	25	5/8	-	-	-	-	-	-	-	-	-	-	-	-	-	-	-
WMA 4...	6	6	12/6	-	x	x	x	x	x	-	-	-	x	-	-	-	-
WNT 10	10	5	12/5	-	x	x	x	x	-	-	-	-	x	-	-	-	-
WNT 16 N	12	5	12/5	-	x	x	x	x	-	-	-	-	x	-	-	-	-
WNT 2.5	5	5	12/5	-	x	x	x	x	-	-	-	-	x	-	-	-	-
WNT 35 N	16	5	12/5	-	x	x	x	x	-	-	-	-	x	-	-	-	-
WNT 4	6	6	12/6	-	x	x	x	x	-	-	-	-	x	-	-	-	-
WNT 6	8	8	12/5	-	x	x	x	x	-	-	-	-	x	-	-	-	-
WNT 70 N	20.5	5	12/5	-	x	x	x	x	-	-	-	-	x	-	-	-	-
WPDB...																	LM MT3000 15x9 GE
WPE 1.5/R3.5	3.5	3.5	12/3.5	-	-	-	-	-	-	-	-	-	-	-	-	-	-
WPE 1.5/ZZ	5	5	12/5	-	x	x	x	x	-	-	-	-	x	-	-	-	-
WPE 10...	10	5	12/5	-	x	x	x	x	-	-	-	-	x	-	-	-	-
WPE 120	32	8	12/6.5	-	-	-	-	-	-	-	-	-	-	-	-	-	-
WPE 16	12	5	12/5	-	x	x	x	x	-	-	-	-	x	-	-	-	-
WPE 16 N	12	5	12/5	-	x	x	x	x	-	-	-	-	x	-	-	-	-
WPE 2.5 N (WPE 1.5)	5	5	12/5	-	x	x	x	x	-	-	-	-	x	-	-	-	-
WPE 2.5...	5	5	12/5	-	x	x	x	x	-	-	-	-	x	-	-	-	-
WPE 2.5/1.5/ZR	5	5	12/5	-	-	-	-	-	-	-	-	-	-	-	-	-	-
WPE 35...	16	5	12/5	-	x	x	x	x	-	-	-	-	x	-	-	-	-
WPE 4	6	6	12/6	-	x	x	x	x	-	-	-	-	x	-	-	-	-
WPE 4N	6	6	12/6	-	-	-	-	-	-	-	-	-	-	-	-	-	-
WPE 50N	18.5	8	12/6.5	-	-	-	-	-	-	-	-	-	-	-	-	-	-
WPE 6	8	8	12/5	-	x	x	x	x	-	-	-	-	x	-	-	-	-

Designation	Terminal width	DEK	WS	ZS	SchT 7	SchT 9/4	SchT 14/6	WTS 3/4	WGB 5 / WAD 5	WGB 8 / WAD 8	WAD 12	WAD 27	ZGB 15 / ZGB 30	BZT 1	BZT 2	EM 6/30	Other
WPE 95N/120N	27	8	15/5	-	-	-	-	-	-	-	-	-	-	-	-	-	-
WPO 4	6	6	10/6	-	-	-	-	-	-	-	-	-	-	-	-	-	-
WSI 25...	18	-	-	-	-	-	-	-	-	-	-	-	-	-	-	-	ESG 6/15
WSI 6...	8	8	12/5	-	-	-	-	X	-	-	-	-	X	-	-	-	-
WSI 6/2...	12	8	12/6.5	-	-	-	-	-	-	-	-	-	-	-	-	-	-
WTD 6/1	8	8	12/5	-	-	-	-	X	-	-	-	-	-	-	-	-	-
WTL 35	16	-	12/6	-	-	-	-	-	-	-	-	-	X	-	-	-	-
WTL 4 ...	6	6	12/6	-	-	-	-	-	-	-	-	-	-	-	-	-	-
WTL 6/1...	8	8	12/8	-	-	-	-	X	-	-	-	-	X	-	-	-	-
WTL 6/2	8	8	12/8	-	-	-	-	X	-	-	-	-	X	-	-	-	-
WTL 6/3...	8	8	12/8	-	-	-	-	X	-	-	-	-	X	-	-	-	-
WTQ 6/1	8	8	12/8	-	-	-	-	X	-	-	-	-	X	-	-	-	-
WTR 2.5 ...	5	5	12/5	-	-	-	-	X	-	-	-	-	X	-	-	-	-
WTR 35 E	32	-	12/6	-	-	-	-	-	-	-	-	-	-	-	-	-	-
WTR 4...	6	6	12/6	-	-	-	-	-	-	-	-	-	-	-	-	-	-
ZAP/TW ZIA 1.5/...	3.8	3.5	-	-	-	-	-	-	-	-	-	-	-	-	-	-	-
ZDK 1.5...	3.5	3.5	12/3.5	-	-	-	-	-	-	-	-	-	-	-	-	-	-
ZDK 2.5...	5	5	12/5	15/5	-	-	-	X	-	-	-	-	X	-	-	-	-
ZDK 2.5-2...	5	5	10/5	10/5	-	-	-	-	-	-	-	-	-	-	-	-	-
ZDK 2.5N...	5.1	5/5	10/5	-	-	-	-	-	-	-	-	-	-	-	-	-	ZAD 9/4
ZDK 4/S/...	6	6	-	12/6	-	-	-	X	-	-	-	-	X	-	-	-	-
ZDK 6/S/...	8	8	-	-	-	-	-	X	-	-	-	-	X	-	-	-	-
ZDKPE 2.5	5	5	10/5	10/5	-	-	-	-	-	-	-	-	-	-	-	-	-
ZDL 2.5/...	5	5	-	10/5	-	-	-	-	-	-	-	-	X	-	-	-	-
ZDLD 2.5-2...	5	5	-	10/5	-	-	-	-	-	-	-	-	X	-	-	-	-
ZDT 2.5 ...	5	5	10/5	10/5	-	-	-	-	-	-	-	-	-	-	-	-	-
ZDTPE 2.5...	5	5	10/5	10/5	-	-	-	-	-	-	-	-	-	-	-	-	-
ZDTR 2.5	5	5	12/5	15/5	-	-	-	X	-	-	-	-	X	-	-	-	-
ZDU (ZPE) 10	10	5	12/5	15/5	-	X	-	-	-	-	-	-	X	X	X	-	-
ZDU (ZPE) 10/S...	10	5	10/5	15/5	-	X	-	-	-	-	-	-	X	X	X	-	-
ZDU (ZPE) 16...	12	5	12/5	15/5	-	X	-	X	-	-	-	-	X	X	X	-	-
ZDU (ZPE) 16/S...	12	5	10/5	15/5	-	X	-	-	-	-	-	-	X	X	X	-	-
ZDU (ZPE) 2.5 ...	5	5	12/5	15/5	-	-	-	X	-	-	-	-	X	X	X	-	-
ZDU (ZPE) 2.5-2/...	5	5	12/5	15/5	-	-	-	X	-	-	-	-	X	-	-	-	-
ZDU (ZPE) 2.5N...	5.1	5/5	10/5	-	-	-	-	-	-	-	-	-	-	-	-	-	ZAD 9/4
ZDU (ZPE) 35...	16	5	12/5	15/5	-	-	-	X	-	-	-	-	X	X	X	-	-
ZDU (ZPE) 4...	6	6	12/6	12/6	-	-	-	X	-	-	-	-	X	X	X	-	-
ZDU (ZPE) 4-2...	6	6	12/6	12/6	-	-	-	-	-	-	-	-	-	-	-	-	-
ZDU (ZPE) 6...	8	8	12/8	15/5	-	-	-	X	-	-	-	-	X	X	X	-	-
ZDU (ZPE) 6-2...	8	8	12/8	12/6	-	-	-	-	-	-	-	-	-	-	-	-	-
ZDU 1.5...	3.5	3.5	12/3.5	-	-	-	-	-	-	-	-	-	-	X	X	-	-
ZDUA (ZPEA) 2.5-2	5	5	8/5	15/5	-	-	-	X	-	-	-	-	X	-	-	-	-
ZDUA 2.5-2N	5	5	10/5	10/5	-	-	-	-	-	-	-	-	-	-	-	-	-
ZDUB (ZPEB) 2.5-2/...	5	5	8/5	15/5	-	-	-	-	-	-	-	-	X	-	-	-	-
ZEI 16	16	5	12/5	15/5	-	-	-	X	-	-	-	-	X	-	-	-	-
ZEI 6	10	8	12/6	12/6	-	-	-	X	-	-	-	-	X	X	X	-	-
ZEW 35/2	8	8	-	-	-	-	-	-	-	-	-	-	-	-	-	X	-
ZIA 1.5 ...	5.08	5	8/5	15/5	-	-	-	X	-	-	-	-	X	-	-	-	-
ZMAK 2.5	5	5	10/5	15/5	-	-	-	-	-	-	-	-	X	-	-	-	-
ZNT 10/S	10	5	-	-	-	-	-	-	-	-	-	-	-	-	-	-	-
ZNT 16/S	12	5	-	-	-	-	-	-	-	-	-	-	-	-	-	-	-
ZNT 2.5/S	5	5	10/5	10/5	-	-	-	-	-	-	-	-	-	-	-	-	-
ZNT 4/S	6	6	10/6	12/6	-	-	-	-	-	-	-	-	-	-	-	-	-
ZNT 6/S	8	8	10/6	12/6	-	-	-	-	-	-	-	-	-	-	-	-	-
ZP 2.5...	5.1	5/5	10/5	10/5	-	-	-	-	-	-	-	-	-	-	-	-	-
ZPE 16-2/1 AN	12	8	12/6	12/6	-	-	-	-	-	-	-	-	-	-	-	-	-
ZPV 1.5	5.08	5	12/5	15/5	-	X	X	X	-	-	-	-	X	-	-	-	-
ZRV 1.5...	5	5	8/5	10/5	-	X	X	X	-	-	-	-	X	-	-	-	-
ZSI 2.5...	8	8	12/5	15/5	-	-	-	X	-	-	-	-	X	-	-	-	-
ZSI 2.5/2...	12	5	12/5	15/5	-	-	-	X	-	-	-	-	X	-	-	-	-
ZSI 6-2/FC	8	6	12/6	12/6	-	-	-	-	-	-	-	-	-	-	-	-	-
ZT 2.5 ...	5	5	10/5	10/5	-	-	-	-	-	-	-	-	-	-	-	-	-
ZTD 6	8	8	12/6.5	-	-	-	-	-	-	-	-	-	-	-	-	-	-
ZTL 6	8	8	12/6.5	-	-	-	-	-	-	-	-	-	-	-	-	-	-
ZTPE 2.5 ...	5	5	10/5	10/5	-	-	-	-	-	-	-	-	-	-	-	-	-
ZTR 2.5...	5	5	12/5	15/5	-	-	-	X	-	-	-	-	X	-	-	-	-
ZTR 2.5-2...	5	5	14/5	10/5	-	-	-	-	-	-	-	-	-	-	-	-	-

DEK card with printing

The Dekafix marker is the universal marker for terminals and plug-in connectors as well as electronic modules from the Weidmüller product range. Dekafix provides you with a wide range of standard printing options. The system is particularly suitable for short sequences of numbers and is also available with customer specific printing.

- In strips for fast installation
- Large selection of ready-to-use printed markers
- Excellent printing quality thanks to the MC Laser
- Available in 4 widths
- Custom printing also possible



Technical data

Material	Polyamide 66, halogen-free
UL 94 flammability rating	V2
Temperature range	-40 °C to 100 °C
Printing	black

Ordering data

Colour	Available in all colours of the international colour code; for MC on request		
	● brown	● red	● orange
	● yellow	● green	● blue
	● violet	● grey	○ white

Qty	500 pcs
-----	---------

Pitch	DEK 5 = 5 mm : DEK 6 = 6 mm : DEK 6.5 = 6.5 mm : DEK 8 = 8 mm
-------	--

Printing variations	FW = consecutive horizontal	e.g. DEK 5 FW 1-50
	FS = consecutive vertical	e.g. DEK 5 FS 51-100
	FWZ = consecutive horizontal line	e.g. DEK 5 FWZ 1-10
	FSZ = consecutive vertical line	e.g. DEK 5 FSZ 21-30
	GW = identical horizontal	e.g. DEK 5 GW A
	GS = identical vertical	e.g. DEK 5 GS B

No. of characters	horizontal	vertical
DEK 5	max. 3 characters	max. 3 characters
DEK 6	max. 3 characters	max. 3 characters
DEK 6.5	max. 4 characters	max. 3 characters
DEK 8	max. 5 characters	max. 3 characters

Specify colour and characters for special printing

Varianten DEK

Table with columns Type/Print and Order No. containing product variants for DEK 5 and DEK 6 series.

Table with columns Type/Print and Order No. containing product variants for DEK 6 series.

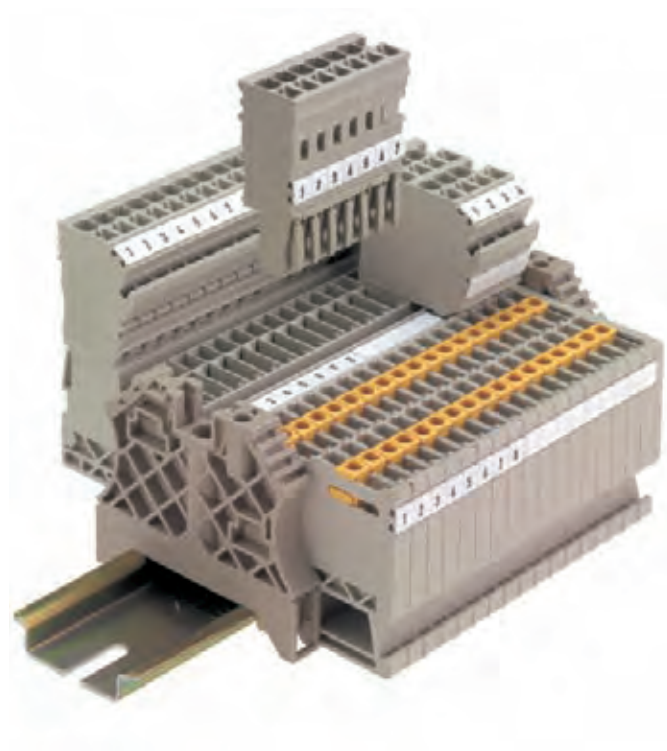
Table with columns Type/Print and Order No. containing product variants for DEK 6 series.

Table with columns Type/Print and Order No. containing product variants for DEK 6, 6.5 and DEK 8 series.

DEK MultiCard

The Dekafix marker in MultiCard format is the universal marker for all kinds of connectors and also electronic modules from the Weidmüller product range. The blank DEK marker is ideal for flexible, fast printing in situ with our innovative labelling systems SMark-Laser, PrintJet, MCP Plus Plotter or MC-Mobilo. The system is particularly suitable for short sequences of numbers and is also available with special printing.

- In strips for fast installation
- Flexible, fast printing on site during installation
- Excellent printing quality thanks to the Weidmüller MultiCard printers
- Available in 6 widths
- Custom printing with the MC Laser also possible



Technical data

Material	Polyamide 66, halogen-free
UL 94 flammability rating	V2
Temperature range	-40 °C to 100 °C
Printing	black

Ordering data

Colour	Available in all colours of the international colour code; for MC on request									
	<table border="0"> <tr> <td>● brown</td> <td>● red</td> <td>● orange</td> </tr> <tr> <td>● yellow</td> <td>● green</td> <td>● blue</td> </tr> <tr> <td>● violet</td> <td>● grey</td> <td>○ white</td> </tr> </table>	● brown	● red	● orange	● yellow	● green	● blue	● violet	● grey	○ white
● brown	● red	● orange								
● yellow	● green	● blue								
● violet	● grey	○ white								
Special printing	Specify special printing and colours per diskette, Excel file or using the M-Print® PRO software.									
Minimum order quantity	1 pack									
Notes on mounting	<p>Mount in strips when the marker pitch (width) corresponds to the pitch of the terminals.</p> <p>For example, DEK 5 mm pitch for terminals with 5 mm pitch such as the WDU 2.5.</p> <p>Mount individual markers when the terminal pitch is larger than the marker pitch (width).</p> <p>For example, DEK 6.5 mount individually on WDU 6 terminals.</p>									

Dekafix - the universal marker for SAK series, W-series, Z-series, P-series and I-series plus WEICOS connectors and electronics devices.



Clamping width: 3.5 mm

DEK - blank

Ordering data

Type	Material colour	Length	Qty.	Order No.
DEK 5/3,5 MC	white	5 mm	500	1755270000

DEK - Custom printing

Type	Material colour	Length	Qty.	Order No.
DEK 5/3,5 MC	white	5 mm	100	1767730000

Clamping width: 5.0 mm

DEK - blank


Type	Material colour	Length	Qty.	Order No.
DEK 5/5 Plus MC	white	5 mm	1000	1854490000
DEK 5/5 Plus MC GE	yellow	5 mm	1000	1907520000
DEK 5/5 MC	white	5 mm	1000	1609801044
DEK 5/5 MC GE	yellow	5 mm	1000	1609801687
DEK 5/5 MC BL	blue	5 mm	1000	1609801693
DEK 5/5 MC GR	grey	5 mm	1000	1609801691
DEK 5/5 MC GN	green	5 mm	1000	1609801688
DEK 5/5 MC RT	red	5 mm	1000	1609801686

DEK - Custom printing


Type	Material colour	Length	Qty.	Order No.
DEK 5/5 MC	white	5 mm	200	1609810000
DEK 5/5 Plus MC	white	5 mm	200	1854500000

Clamping width: 6.0 / 6.5 mm

DEK - blank


Type	Material colour	Length	Qty.	Order No.
DEK 5/6 MC	white	5 mm	1000	1609820000
DEK 5/6 MC PLUS	white	5 mm	1000	1011320000
DEK 5/6,5 MC	white	5 mm	900	1609840000
DEK 5/6,5 PLUS MC	 white	5 mm	900	1046340000

DEK - Custom printing


Type	Material colour	Length	Qty.	Order No.
DEK 5/6 MC SDR	white	5 mm	200	1609830000
DEK 5/6 MC SDR PLUS	white	5 mm	200	1038650000
DEK 5/6,5 MC	white	5 mm	180	1609850000
DEK 5/6,5 PLUS MC	 white	5 mm	180	1046360000

Clamping width: 7.5 / 8.0 mm

DEK - blank

Type	Material colour	Length	Qty.	Order No.
DEK 5/7,5 MC	white	5 mm	320	1720620000
DEK 5/8 MC	white	5 mm	800	1856740000
DEK 5/8 PLUS MC	 white	5 mm	800	1046350000

DEK - Custom printing

Type	Material colour	Length	Qty.	Order No.
DEK 5/7,5 MC	white	5 mm	64	1770490000
DEK 5/8 MC	white	5 mm	160	1856750000
DEK 5/8 PLUS MC	 white	5 mm	160	1046370000

WS

WS markers are designed specifically for W series terminals. But thanks to their system compatibility, WS markers can also be used with the I series, Z series and P series. The generous size of these markers permit long characters strings and multiple-line printing.

WS markers are ideal for labelling where long, individual character strings are required. And the proven MultiCard format makes labelling possible with the SMark-Laser, PrintJet, MCP Plus Plotter or MC-Mobilo as well.

- Mount in strips or individually
- Markers in the proven MultiCard format
- Excellent printing quality thanks to the Weidmüller MultiCard printers



Technical data

Material	Polyamide 66, halogen-free
UL 94 flammability rating	V2
Temperature range	-40 °C to 100 °C
Printing	black

Bestellhinweis

Colour	Available in all colours of the international colour code; for MC on request ● brown ● red ● orange ● yellow ● green ● blue ● violet ● grey ○ white
Special printing	Specify special printing and colours per diskette, Excel file or using the M-Print® PRO software.
Minimum order quantity	1 pack
Notes on mounting	Mount in strips when the marker pitch (width) corresponds to the pitch of the terminals. For example, WS 10/6 = 6 mm pitch for terminals with 6 mm pitch such as the WDU 4. Mount individual markers when the terminal pitch is larger than the marker pitch (width). For example, WS 12/6.5 mount individually on WDU 6 terminals. Weidmüller markers with 5 mm pitch (width) are suitable for all widths of terminals.

ZS

ZS markers – in the proven MultiCard format – were specially developed for Z series terminals. They provide users with a large labelling area. Their unique hinged form means that cross-connectors, for example, are still readily accessible without having to remove the marker. Markers can be clipped on in strips to guarantee fast installation, but individual markers are easily separated.

- Hinged labelling area
- Mount in strips or individually
- Markers in the proven MultiCard format
- Flexible, fast printing on site during installation



Technical data

Material	Polyamide 66, halogen-free
UL 94 flammability rating	V2
Temperature range	-40 °C to 100 °C
Printing	black

Ordering data

Colour	white
Notes on mounting	height x width (pitch), e.g. ZS 10/5: 10 mm high, 5 mm wide = 5 mm pitch
Special printing	Specify special printing per diskette, Excel file or using the M-Print® PRO software.
Suitable printing systems	SMark-Laser, PrintJet, MCP Plus Plotter, MC-Mobilo
Minimum order quantity	1 pack

WS / ZS

WS markers are perfect for the connectors of the W-series, I-series, P-series and Z-series. WS 10/5 and 10/6 Middle are fitted with a centre foot and can be used for the I-series. The ZS markers are specially conceived for the Z-series.



Clamping width: 3.5 mm

WS - blank

Ordering data

Type	Material colour	Length	Qty.	Order No.
WS 12/3,5 MC	white	12 mm	600	1778270000

WS - Custom printing

Type	Material colour	Length	Qty.	Order No.
WS 12/3,5 MC	white	12 mm	120	1778280000

Clamping width: 5.0 mm

WS - blank

Type	Material colour	Length	Qty.	Order No.
WS 8/5 MC	white	8 mm	720	1640740000
WS 8/5 MC GE	yellow	8 mm	720	1773521687
WS 8/5 MC RT	red	8 mm	720	1773521686
WS 8/5 MC BL	blue	8 mm	720	1773521693
WS 8/5 MC OR	orange	8 mm	720	1773521690
WS 8/5 PLUS MC	white	8 mm	600	1951870000
WS 10/5 MC	white	10 mm	720	1635000000
WS 10/5 MC GE	yellow	10 mm	720	1773531687
WS 10/5 MC Middle	white	10 mm	720	1792000000
WS 10/5 MC RT	red	10 mm	720	1773531686
WS 10/5 MC BL	blue	10 mm	720	1773531693
WS 10/5 PLUS MC	n white	10 mm	600	1046380000
WS 12/5 MC	white	12 mm	720	1609860000
WS 12/5 MC GE	yellow	12 mm	720	1773541687
WS 12/5 MC RT	red	12 mm	720	1773541686
WS 12/5 MC BL	blue	12 mm	720	1773541693
WS 12/5 MC OR	orange	12 mm	720	1773541690
WS 12/5 MC PLUS	white	12 mm	600	1927510000
WS 14/5 MC	white	14 mm	480	1768090000
WS 15/5 MC	white	15 mm	480	1609880000
WS 15/5 MC GE	yellow	15 mm	480	1773571687

WS - Custom printing

Type	Material colour	Length	Qty.	Order No.
WS 8/5 MC	white	8 mm	144	1640750000
WS 8/5 MC PLUS	white	8 mm	120	1038790000
WS 10/5 MC	white	10 mm	144	1635010000
WS 10/5 MC Middle	white	10 mm	144	1792010000
WS 10/5 PLUS MC	n white	10 mm	120	1046320000
WS 12/5 MC	white	12 mm	144	1609870000
WS 12/5 MC PLUS	white	12 mm	120	1927520000
WS 15/5 MC	white	15 mm	96	1609890000

Clamping width: 6.0 mm

WS - blank

Type	Material colour	Length	Qty.	Order No.
WS 8/6 PLUS MC	white	8 mm	600	1951880000
WS 10/6 MC	white	10 mm	600	1828450000
WS 10/6 MC Middle	white	10 mm	600	1818400000
WS 10/6 MC Middle GN	green	10 mm	600	1917420000
WS 10/6 MC Middle GE	yellow	10 mm	600	1917430000
WS 10/6 MC Middle RT	red	10 mm	600	1917440000
WS 10/6 MC Middle OR	orange	10 mm	600	1917410000
WS 10/6 PLUS MC	n white	10 mm	600	1046390000
WS 12/6 MC	white	12 mm	600	1609900000
WS 12/6 MC GE	yellow	12 mm	600	1773551687
WS 12/6 MC RT	red	12 mm	600	1773551686
WS 12/6 MC BL	blue	12 mm	600	1773551693
WS 12/6 MC OR	orange	12 mm	600	1773551690
WS 12/6 MC BR	brown	12 mm	600	1773551692
WS 12/6 MC VI	magenta	12 mm	600	1773551689
WS 12/6 MC PLUS	white	12 mm	600	1927530000

WS markers are perfect for the connectors of the W-series, I-series, P-series and Z-series. WS 10/5 and 10/6 Middle are fitted with a centre foot and can be used for the I-series. The ZS markers are specially conceived for the Z-series.



Ordering data

WS - Custom printing

Type	Material colour	Length	Qty.	Order No.
WS 8/6 PLUS MC	white	8 mm	120	1038820000
WS 10/6 MC	white	10 mm	120	1828460000
WS 10/6 MC Middle	white	10 mm	120	1818410000
WS 10/6 PLUS MC	white	10 mm	120	1046330000
WS 12/6 MC	white	12 mm	120	1609910000
WS 12/6 MC PLUS	white	12 mm	120	1927540000

Clamping width: 6.5 mm

WS - blank

Type	Material colour	Length	Qty.	Order No.
WS 12/6,5 MC	white	12 mm	540	1609920000
WS 12/6,5 MC GE	yellow	12 mm	540	1773561687
WS 12/6,5 MC RT	red	12 mm	540	1773561686
WS 12/6,5 MC BL	blue	12 mm	540	1773561693
WS 12/6,5 MC GN	green	12 mm	540	1773561688

WS - Custom printing

Type	Material colour	Length	Qty.	Order No.
WS 12/6,5 MC	white	12 mm	108	1609930000

Clamping width: 8.0 mm

WS - blank

Type	Material colour	Length	Qty.	Order No.
WS 10/8 MC	white	10 mm	420	1905950000
WS 12/8 MC	white	12 mm	420	1906000000

WS - Custom printing

Type	Material colour	Length	Qty.	Order No.
WS 10/8 MC	white	10 mm	84	1906030000
WS 12/8 MC	white	12 mm	84	1906010000

Clamping width: 12.0 / 15.0 mm

WS - blank

Type	Material colour	Length	Qty.	Order No.
WS 10/12 MC	white	10 mm	300	1905970000
WS 10/15 MC	white	10 mm	240	1854090000

WS - Custom printing

Type	Material colour	Length	Qty.	Order No.
WS 10/12 MC	white	10 mm	60	1906060000
WS 10/15 MC	white	10 mm	48	1854100000

Clamping width: 5.0 mm

ZS - blank

Type	Material colour	Length	Qty.	Order No.
ZS 10/5 MC	white	10 mm	480	1610000000
ZS 15/5 MC	white	15 mm	480	1646630000

ZS - Custom printing

Type	Material colour	Length	Qty.	Order No.
ZS 10/5 MC	white	10 mm	96	1610010000
ZS 15/5 MC	white	15 mm	96	1646640000

Clamping width: 6.0 mm

ZS - blank

Type	Material colour	Length	Qty.	Order No.
ZS 12/6 MC	white	12 mm	400	1610020000

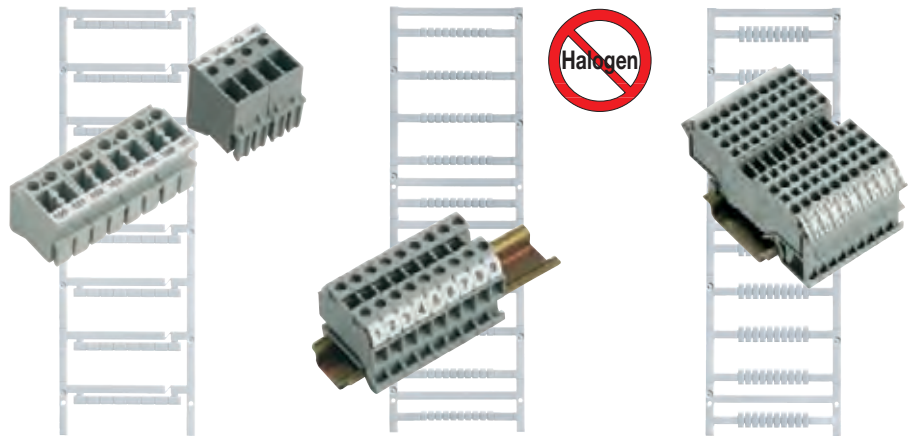
ZS - Custom printing

Type	Material colour	Length	Qty.	Order No.
ZS 12/6 MC	white	12 mm	80	1610030000

MultiFit

MultiFit is Weidmüller's marker system for use with other makes of terminals with pitches of 4, 5, 6, 7.5, 8 and 10 mm.

- Blank markers ready for users to print with SMark-Laser, PrintJet, Plotter or MC-Mobilo
- Individually printed markers supplied based on customer CAE data or specifications
- One marker suitable for various terminal manufacturers










Technical data









Material	Polyamide 66, halogen-free
UL 94 flammability rating	V2
Temperature range	-40 °C to 100 °C
Printing	black

Ordering data

Colour	Available in all colours of the international colour code; for MC on request ● brown ● red ● orange ● yellow ● green ● blue ● violet ● grey ○ white
Special printing	Specify special printing and colours per diskette, Excel file or using the M-Print® PRO software.
Minimum order quantity	1 pack

Application options

	 MF 8/5	 MF 10/5 MF 10/6	 MF 12/5	 MF 5/4 MF 5/5 MF 5/6	 MF-W 5/5 Mini	 MF-W 9/4 MF-W 9/5 MF-W 9/6	 MF-W 9/5 F MF-W 9/4.2 F MF-W 9/5.2 F MF-W 9/6.2 F
Wago	●	●	●		● Similar to the WagoMini WSB Type 248-...264-...	● Similar to the Wago WSB Type 209-...249-...	● Similar to the Wago WMB Type 793-...794-... For Wago TopJob S
Phoenix	●	●	●	● MF 5/5 Similar to the Phoenix Contact ZBF 5 MF 5/6 Similar to the Phoenix Contact ZBF 6 MF 5/4 Similar to the Phoenix ZBF 4			
Wieland	●	●	●				
Legrand	●	●	●		●	●	●
Entrelec	●	●	●		●		
Télémechanique	●	●	●				

	 MF 10/8	 MF 10/10	 MF 4/5.2	 MF 5/7.5	 MF 10/5 MF 12/5	 MF-SI	 MF-WO	 MFF
Siemens						●		
Phoenix	● ZB 8	● ZB 10	● BN-ZB 5.2	● BN-ZB 7.5				
Wieland								
Legrand								
Entrelec	●	●						
Woertz							●	
Adels RKW				● BZ 14				
Cabur					● Cabur			
Festo								●

● = OK

(Please select the marker according to the width of the terminal)

Please note:

The recommended applications given above do not release the user from his obligation to check the applicability in each individual application. The marker/terminal combination should in each case be chosen in such a way that either the marker pitch matches the terminal pitch, or the marker pitch is smaller than the terminal pitch.

MultiFit for use with other makes of terminals



Clamping width: 4.0 mm

MultiFit - blank

Ordering data

Type	Material colour	Length	Qty.	Order No.
MF 5/4 MC	white	5 mm	500	1877690000
MFF 9/4 MC	white	9 mm	500	1877720000
MF-W 9/4 MC	white	9 mm	500	1877730000
MF-W 9/4.2F MC	white	9 mm	500	1011430000

MultiFit - Custom printing

Type	Material colour	Length	Qty.	Order No.
MF 5/4 MC	white	5 mm	100	1877670000
MFF 9/4 MC	white	9 mm	100	1877700000
MF-W 9/4 MC	white	9 mm	100	1877710000
MF-W 9/4.2F MC	white	9 mm	100	1038750000

Clamping width: 5.0 mm

MultiFit - blank

Type	Material colour	Length	Qty.	Order No.
MF 4/5,2 MC	white	4 mm	500	1907530000
MF 5/5 MC	white	5 mm	500	1816250000
MF-W 5/5 MC Mini	white	5 mm	500	1816240000
MF-W 5/5 MC Mini GN	green	5 mm	500	1924290000
MF-W 5/5 MC Mini BL	Blue	5 mm	500	1924270000
MF-W 5/5 MC Mini GE	yellow	5 mm	500	1924280000
MF-W 5/5 MC Mini RT	red	5 mm	500	1924260000
MF-WO 5/5 MC	white	5 mm	400	1716800000
MF 8/5 MC	white	8 mm	600	1677140000
MF-SI 8/5 MC	white	8 mm	400	1889180000
MF-W 9/5 MC	white	9 mm	500	1816270000
MF-W 9/5F MC	white	9 mm	500	1816280000
MF-W 9/5.2F MC	white	9 mm	500	1011410000
MF-WO 9/5 MC	white	9 mm	400	1716840000
MF 10/5 MC	white	10 mm	600	1677160000
MF-SI 10/5 MC	white	10 mm	400	1889190000
MF 10/5 MC Cabur	white	10 mm	600	1854510000
MF 12/5 MC	white	12 mm	600	1677180000
MF-WO 12/5 MC	white	12 mm	400	1692270000
MF 12/5 MC Cabur	white	12 mm	600	1854520000

MultiFit - Custom printing

Type	Material colour	Length	Qty.	Order No.
MF 4/5,2 MC	white	4 mm	100	1038690000
MF 5/5 MC	white	5 mm	500	1816320000
MF-W 5/5 Mini MC	white	5 mm	500	1816310000
MF-WO 5/5 MC	white	5 mm	80	1716810000
MF 8/5 MC	white	8 mm	120	1677150000
MF-SI 8/5 MC	white	8 mm	80	1886270000
MF-W 9/5 MC	white	9 mm	500	1816340000
MF-W 9/5F MC	white	9 mm	500	1816350000
MF-WO 9/5 MC	white	9 mm	80	1716850000
MF-W 9/5.2F MC	white	9 mm	100	1038760000
MF 10/5 MC	white	10 mm	120	1677170000
MF-SI 10/5 MC	white	10 mm	80	1889170000
MF 10/5 MC CABUR	white	10 mm	120	1038660000
MF 12/5 MC	white	12 mm	120	1677190000
MF-WO 12/5 MC	white	12 mm	80	1692280000
MF 12/5 MC CABUR	white	12 mm	120	1038670000



Clamping width: 6.0 mm

MultiFit - blank

Ordering data

Type	Material colour	Length	Qty.	Order No.
MF 5/6 MC	white	5 mm	500	1816260000
MF-SI 8/6 MC	white	8 mm	320	1889240000
MF-W 9/6 MC	white	9 mm	500	1816290000
MF-W 9/6.2F MC	white	9 mm	500	1011420000
MF-WO 9/6 MC	white	9 mm	400	1716820000
MF 10/6 MC	white	10 mm	600	1677220000
MFF 10/6 MC	white	10 mm	600	1856780000
MF-SI 10/6 MC	white	10 mm	320	1889260000
MF-WO 12/6 MC	white	12 mm	400	1692290000

MultiFit - Custom printing

Type	Material colour	Length	Qty.	Order No.
MF 5/6 MC	white	5 mm	500	1816330000
MF-SI 8/6 MC	white	8 mm	64	1889230000
MF-W 9/6 MC	white	9 mm	500	1816360000
MF-WO 9/6 MC	white	9 mm	80	1716830000
MF-W 9/6.2F MC	white	9 mm	100	1038770000
MF 10/6 MC	white	10 mm	120	1677230000
MFF 10/6 MC	white	10 mm	120	1856790000
MF-SI 10/6 MC	white	10 mm	64	1889250000
MF-WO 12/6 MC	white	12 mm	80	1692300000

Clamping width: 6.5 / 7.5 mm

MultiFit - blank

Type	Material colour	Length	Qty.	Order No.
MF 5/ 7,5 MC	white	5	320	1877680000
MF-SI 7/5-6,5 MC	white	7	320	1889780000
MF-SI 10/5-6,5 MC	white	10	320	1889800000

MultiFit - Custom printing

Type	Material colour	Length	Qty.	Order No.
MF 5/7,5 MC	white	5	64	1877660000
MF-SI 7/5-6,5 MC	white	7	64	1889770000
MF-SI 10/5-6,5 MC	white	10	64	1889790000

Clamping width: 8.0 / 10.0 mm

MultiFit - blank

Type	Material colour	Length	Qty.	Order No.
MF 5/10 MC	white	5	250	1954050000
MF 10/8 MC	white	10	350	1868440000
MF 10/10 MC	white	10	200	1856760000

MultiFit - Custom printing

Type	Material colour	Length	Qty.	Order No.
MF 5/10 MC	white	5	50	1038730000
MF 10/8 MC	white	10	70	1868430000
MF 10/10 MC	white	10	40	1856770000

Cross-reference table

Cross-reference table

Phoenix

	MF 5/4	MF 5/5	MF 8/5	MF 10/5	MF 12/5	MF 5/6	MF 10/6	MF 10/8	MF 10/10	MF 5/7,5	MF 4/5,2		MF 5/4	MF 5/5	MF 8/5	MF 10/5	MF 12/5	MF 5/6	MF 10/6	MF 10/8	MF 10/10	MF 5/7,5	MF 4/5,2	
AKG 16...							X						QTCU 1,5 ...											
AKG 35...							X						QTCU 2,5 ...	X	X	X		X	X					
AKG 4			X	X	X								QTTCB 1,5 ...	X										
DFK 4...							X						QTTCBS 1,5 ...	X										
DFK 5...							X						RT 3...									X		
DIK 1,5...						X	X						RT 5...									X		
DIKD 1,5...						X	X						RT 8...									X		
DLK.. 2,5...						X	X						RTO 3...									X		
DOK 1,5...						X	X						RTO 5...									X		
DT 6/2,5-DREH...									X				RTO 8...									X		
DTI 2,5 ...		X	X	X									RV 8-TP ...						X					
DTI 4 ...						X	X						RVS 10-TP...					X						
DTI 6 ...								X					SC 2,5...		X									
DTME.. 6 ...								X					SC 4...				X							
DTN 2,5 ...		X	X	X									SGSK 6								X			
DTN 4 ...						X	X						SP 2,5/...	X										
DTN 6 ...								X					SP.. 2,5/...	X										
EC-E...		X											SP 4/...					X						
GE 10...									X				SLKK 5...					X	X					
GE 35...									X				SRDK 6								X			
GTF 76/...									X				SRTK 6								X			
HDFK 10								X					SSL 2,5		X									
HDFK 16									X				ST 1,5...	X										
HDFK 25									X				ST 2,5....		X	X								
HDFK 4							X						ST 2,5-3...		X									
HDFK 50/...									X				ST 2,5-PCB...		X									
HDFK 95									X				ST 2,5-PE/./..		X									
HV M5/...									X				ST 2,5-4...		X									
HV M6/...									X				ST 4....					X						
HV M8/...									X				ST 4-PE/...					X						
HV M10/...									X				ST 4-HE./...					X						
HV M12/...									X				ST 4-FSI/C ...								X			
IL...						X							ST 4-PCB...					X						
IB...						X							ST 6 ...					X						
MKB ...											X		ST 10 ...					X						
MBK 2,5/E...											X		ST 16 ...					X						
MBK 3...											X		ST 35 ...					X						
MBK 3/E-Z...		X	X	X	X								STI 10...		X									
MBK 5...													STI 16...					X					X	
MBK 5/E-...													STI 2,5...		X	X	X						X	
MBK 5/E-Z...						X	X						STI 2,5-PE/./..		X	X	X	X						
MBK 6/E...								X					STI 2,5-L ...		X	X	X	X						
MBKKB 2,5...		X	X	X	X								STI 4...					X	X					
MSB 2,5 ...		X											STIO 2,5/3-...		X									
MSDB 2,5 ...		X											STIO-IN 2,5/3...		X									
MSBV 2,5 ...		X											STIO 2,5/4-...					X						
MSDBV 2,5 ...		X											STIO-IN 2,5/4...					X						
MSLKG 2,5											X		STME .. 6 ...								X			
MSLKG 5										X			STN 10										X	
MSLKG 6								X					STN 16					X						
MT 1,5...	X												STN 2,5		X									
MTK ...		X	X	X	X								STN 35									X		
MTKD-...									X				STN 4					X						
MITB 1,5...	X												STS 2,5...		X	X	X	X						
MZB 1,5...		X											STS 4...					X	X					
MZDB 1,5...		X											STS 6...								X			
MZFK 1,5...		X											STTB 1,5...	X										
MZFKK 1,5 ...		X											STTB 2,5...		X									
MZFKKB 1,5		X											STTB 4...					X						
OTTA 2,5								X					STTB 2,5 ...		X	X	X							
OTTA 25									X				STTB 4-...					X	X					
OTTA 6...									X				STU 2,5-TWIN ...		X	X								
PCVK 4-7,62 ...						X	X						STU 4-TWIN ...					X						
PIK 4-...						X	X						STU 10/ ...					X						
PIK 6-...								X					STU 35/ ...					X						
PIT 2,5 ...		X											STTB 4 ...					X						
PITTB 2,5 ...		X											TCP...		X									
PITTB 2,5 ...		X											TMC...								X			
PIT 2,5-3 ...		X											TMCP-CONNECT-LR								X			
PIT 2,5-PE/./..		X											TMCP-SOCKET-M								X			
PP-H 2,5/...		X											TRK 4 (pitch 7.5)										X	
PVB...							X						TF-STTB-...						X					
QP 1,5/...		X											UDK 3...		X	X	X	X						
QTC 1,5 ...		X	X	X									UDK 4...					X	X					
QTC 2,5 ...						X	X						UDK 4-MTK					X	X					
QTC 2,5-HE./...						X							UDK 5-MTK					X	X					
QTCS 1,5 ...		X	X	X									UDMTK 5...					X	X					
QTCS 2,5 ...						X	X						UGSK 6								X			

Individual mounting is required if the terminal pitch is larger than the marker.

Phoenix

	MF 5/4	MF 5/5	MF 8/5	MF 10/5	MF 12/5	MF 5/6	MF 10/6	MF 10/8	MF 10/10	MF 5/7,5	MF 4/5,2
UGSK/S								X			
UHK 4-FS...						X	X				
UHV 150-...									X		
UHV 240-...									X		
UHV 25-...									X		
UHV 50-...									X		
UHV 95-...									X		
UIK 16...									X		
UIK 35...									X		
UISLKG 16...									X		
UISLKG 35...									X		
UK 1,5 N...	X										
UK 10 N									X		
UK 10,3-... HESI...									X		
UK 10-DRHESI...							X				
UK 16 N									X		
UK 2,5 N		X	X	X	X						
UK 3 N		X	X	X	X						
UK 35									X		
UK 35 N...									X		
UK 4...						X	X				
UK 5 N						X	X				
UK 5-HESI								X			
UK 5-MTK...						X	X				
UK 6 N								X			
UK 6,3-HESI									X		
UK 6-FSI/C...								X			
UKB 4 ...							X				
UKH 150 ...									X		
UKH 240 ...									X		
UKH 50 ...									X		
UKH 95 ...									X		
UKK 3...		X	X	X	X						
UKK 4-FS...						X	X				
UKK 5...						X	X				
UKKB 3...		X	X	X	X						
UKKB 5...						X	X				
UKKB 10									X		
UKKB 10/2,5		X	X	X	X				X		
UKN 10 N...									X		
UKN 16 N...									X		
UKN 2,5...						X	X				
UKN 35...									X		
UKN 5...						X	X				
UKN 6 N...								X			
UK-SI									X		
URDK 6									X		
URKN									X		
URKN/S									X		
URTK 6									X		
URTK/S									X		
URTK/S-BEN ...									X		
URTK/SP									X		
URTK/SS						X	X				
URTKD/SP									X		
UP 4/...						X					
UPBV 2,5/...		X									
UPBV 4/...						X					
UPCV3K ...						X	X				
USED 16									X		
USED 27									X		
USEN 14									X		
USEN 18									X		
USIG...									X		
USK 4-FS...						X	X				
USKLG 1,5 N	X										
USKLG 10 N...									X		
USKLG 16 N...									X		
USKLG 2,5 N...		X	X	X	X						
USKLG 3...		X	X	X	X						
USKLG 35									X		
USLKG 35 N									X		
USKLG 5...						X	X				
USKLG 50									X		
USKLG 6 N...								X			
USKLG 95									X		
UT 10 ...									X		
UT 16 ...									X		

Individual mounting is required if the terminal pitch is larger than the marker.

	MF 5/4	MF 5/5	MF 8/5	MF 10/5	MF 12/5	MF 5/6	MF 10/6	MF 10/8	MF 10/10	MF 5/7,5	MF 4/5,2
UT 35 ...											
UT 2,5 ...			X	X	X						
UT 4 ...							X				
UT 4-HEDI ...						X	X				
UT 4-HESI ...						X	X				
UT 4-PE/...						X	X				
UTME ... 6 ...								X			
UTTB 2,5-...		X	X	X	X						
UTTB 4-...						X	X				
UT 6 ...								X			
UT 6-TMC M...									X		
UTI 16 ...									X		
UTI 35 ...									X		
UTN 2,5		X	X	X	X						
UTN 4						X	X				
UTN 6								X			
UTN 10									X		
UTN 16									X		
UTN 35									X		
UVKB 4-FS...						X	X				
VBSN 4							X				
VBST 4-FS...						X	X				
VKK 4-FS						X	X				
VIOK 1,5...						X	X				
W 80/...							X				
ZDIK 1,5...		X									
ZDMTK 2,5...						X					
ZFK 6-DREHSI...						X					
ZFKK 2,5-MT...		X									
ZGSK 4								X			
ZPV 1,5/2,5		X	X	X	X						
ZRTK 4								X			
ZRV 8						X	X				
ZVIOK 1,5...		X									

Cross-reference table

WAGO

	MF-W 9/4	MF-W 5/5 mini	MF-W 9/5	MF-W 9/5 F	MF-W 9/6		MF-W 9/4	MF-W 5/5 mini	MF-W 9/5	MF-W 9/5 F	MF-W 9/6		MF-W 9/4	MF-W 5/5 mini	MF-W 9/5	MF-W 9/5 F	MF-W 9/6	
Feed-through terminals																		
264-701/704/706		X				880-681/682/684						280-521/525						
264-711/714/716		X				880-831/832/834		X	X	X		280-522/526		X	X	X		
264-721/724/726		X				880-901/902/904		X	X	X		280-523/533		X	X	X		
264-731/734/736		X				880-961/964/962		X	X	X		280-524/534		X	X	X		
264-120/125/220/225		X				Protective earth terminals						280-527/537		X	X	X		
279-101/104	X					264-727		X				280-532		X	X	X		
279-604/621	X					264-737		X				280-543		X	X	X		
279-626/826	X					279-687		X				281-619/629						X
279-681...686	X					279-837		X				281-620/630						X
279-831...836	X					279-907		X				870-101...104		X	X	X		
279-901...906	X					280-107		X	X	X		870-107		X	X	X		
279-989...995	X					280-607		X	X	X		870-108		X	X	X		
280-101/104	X					280-637		X	X	X		870-117/127		X	X	X		
280-601/602		X	X	X		280-677		X	X	X		870-501...504		X	X	X		
280-603/633/634		X	X	X		280-687		X	X	X		870-507		X	X	X		
280-604/621/826/626		X	X	X		280-837		X	X	X		870-508/509		X	X	X		
280-641/651/654		X	X	X		280-907		X	X	X		870-517/527		X	X	X		
280-646/656/946		X	X	X		281-107					X	870-531...534		X	X	X		
280-653/671/672		X	X	X		281-607					X	870-535/536		X	X	X		
280-681/684/650		X	X	X		281-637					X	870-537		X	X	X		
280-830...835		X	X	X		281-657					X	870-538/538		X	X	X		
280-901...906		X	X	X		281-687					X	870-826		X	X	X		
280-989...995		X	X	X		281-907					X	Three- and four-tier terminals						
280-996...999		X	X	X		282-107					X	280-549/551		X	X	X		
280-691		X	X	X		282-607					X	280-550		X	X	X		
281-101/104					X	282-687					X	280-552		X	X	X		
281-601/604					X	282-907					X	280-547/557/597		X	X	X		
281-631/651					X	283-607					X	280-548/558		X	X	X		
281-652...654					X	283-609					X	281-531/532						X
281-663/664/668					X	283-677					X	870-551/553		X		X		
281-678/681/684					X	283-907					X	870-556		X		X		
281-901/902/904					X	284-107					X	870-558/559/567/577		X		X		
281-992...994/998/691					X	284-607					X	870-557		X		X		
282-101/104					X	284-687					X	281-530						X
282-601/604					X	284-907					X	Routing and potential terminals						
282-681/682/684					X	285-197					X	727-... all						X
282-901/902/904					X	285-607		X			X	280-675				X		
282-992/993/691					X	285-637		X			X	Honeycomb elements						
283-101/104					X	780-607			X	X		726-... all				X		
283-601/604					X	780-637			X	X		Single terminals						
283-671/672/674					X	781-607			X	X		264-130/131		X				
283-901/902/904					X	782-607			X	X		264-230/231		X				
283-992/998/691					X	783-607			X	X		264-180/280		X				
284-101/104					X	784-607			X	X		Pluggable relays and bases						
284-601/604					X	785-607			X	X		286-... all		X				
284-621/624					X	870-687		X		X		786-... all		X				
284-681/682/684					X	870-837		X		X		788-... all				X		X
284-691/992/993					X	870-907		X		X		789-... all			X			
284-901/902/904					X	870-917		X		X		Multi-tier terminals						
285-194/195					X	880-687		X	X	X		775-641				X	X	
285-601/604/607					X	880-837		X	X	X		775-642/649				X	X	
285-634/635		X			X	880-907		X	X	X		775-646				X	X	
285-691					X	Fuse terminals						775-645				X	X	
285-992/995					X	282-698						777-641						X
290-861/864/867		X	X	X		282-696						777-642						X
780-601/602/604			X	X		281-611/612/616/622						777-646						X
780-631/651/654			X	X		281-624/672						777-645						X
780-992/993			X	X		281-613/623						777-648						X
781-601/604					X	282-122						777-647						X
781-631/651					X	282-120						777-649						X
781-992/993					X	282-126						777-651						X
782-601/604					X	282-124						777-650						X
782-992					X	282-128						777-652						X
783-601/604					X	Two-tier terminals						776-641					X	
783-992					X	279-501/512/513		X				776-645/646						X
784-601/604					X	279-504		X				776-649/642						X
784-992					X	279-507		X				776-650/651						X
785-601/604/613					X	279-508		X				Disconnect test terminals						
792-... all		X				279-509		X				280-612/614				X	X	
812-140			X	X	X	279-517/527		X				280-622/623/627				X	X	
859-...all		X				280-513			X	X	X							
870-681/682/684		X		X		280-517			X	X	X							
870-831/832/834		X		X		280-519/529			X	X	X							
870-901/902/904		X		X		280-520/530			X	X	X							
870-911/912/914		X		X														
880-661/662/664		X	X	X														

The markers must be mounted individually when the terminal pitch is larger than 6.2 mm.

WAGO

	MF-W 9/4	MF-W 5/5 mini	MF-W 9/5	MF-W 9/5 F	MF-W 9/6
280-649/676/685/695			X	X	
280-683			X	X	
280-805/836/829/839			X	X	
280-868/870/876/879		X	X		
280-869/871/880		X	X		
280-874/881/883/885		X	X		
280-875/882/884		X	X		
280-912...914			X		
281-659/660					X
281-666					X
281-683					X
281-912					X
282-131					X
282-133					X
282-135					X
282-138...141					X
282-694/699					X
282-811/821		X			X
282-860			X		X
282-865					X
282-866/695/697					X
282-870			X		X
781-613/623					X
781-643/653					X
782-613/623					X
783-613/623					X
784-613/623					X

Initiator terminals

270-560/564		X			
270-570/574		X			
270-572/577		X			
270-585/586		X			
280-553/560		X	X	X	
280-559		X	X	X	
280-561		X	X	X	
280-563		X	X	X	
280-564		X	X	X	
280-567		X	X	X	
280-570		X	X	X	
280-571		X	X	X	

	MF-W 9/4	MF-W 5/5 mini	MF-W 9/5	MF-W 9/5 F	MF-W 9/6
280-573		X	X	X	
280-574		X	X	X	
280-577		X	X	X	
280-580		X	X	X	
280-582		X	X	X	
280-583		X	X	X	
280-584		X	X	X	
280-588		X	X	X	

Actuator terminals

280-515		X	X	X	
280-554		X	X	X	
280-555		X	X	X	
280-556		X	X	X	
280-562		X	X	X	
280-565		X	X	X	
280-566		X	X	X	
280-568		X	X	X	
280-572		X	X	X	
280-575		X	X	X	
280-576		X	X	X	
280-578		X	X	X	
280-583		X	X	X	
280-585		X	X	X	
280-586		X	X	X	
280-592		X	X	X	
280-593		X	X	X	

Diode and LED terminals

279-620		X			
279-623		X			
279-624		X			
279-673		X			
279-674		X			
279-809		X			
279-815		X			
279-915		X			
280-613			X	X	
280-615			X	X	
280-623			X	X	
280-624			X	X	

	MF-W 9/4	MF-W 5/5 mini	MF-W 9/5	MF-W 9/5 F	MF-W 9/6
280-655			X	X	
280-658			X	X	
280-673			X	X	
280-809			X	X	
280-815			X	X	
280-915			X	X	
280-940			X	X	
280-941			X	X	
280-942			X	X	
280-943			X	X	
281-603					X
281-633					X
281-634					X
281-635					X
281-636					X
281-665					X
281-673					X
281-915					X
870-540		X	X	X	
870-541		X	X	X	
870-542		X	X	X	
870-543		X	X	X	
870-590		X	X	X	
870-593		X	X	X	
870-596		X	X	X	

X-Com system

769... all		X			
------------	--	---	--	--	--

WAGO I/O modules TOPLON

	MF-W 5/5 mini	MF 5/10	ESG 8/11
750... all	X	X	X

Wago TOPJOB S

	MF-W 9/4,2 F	MF-W 9/5,2 F	MF-W 9/6,2 F
2001-12..	X		
2001-13..	X		
2001-14..	X		
2002-12..		X	
2002-13..		X	
2002-14..		X	
2002-16..		X	
2002-18..		X	
2002-22..		X	
2002-29..		X	
2002-32..		X	
2002-63..		X	
2002-64..		X	
2002-71..		X	
2003-76..		X	
2004-12..			X
2004-13..			X
2004-14..			X
2005-76..			X
2006-12..			X
2006-13..			X
2006-71..			X
2010-12..			X
2010-13..			X
2016-12..			X
2016-13..			X
2016-71..			X

The markers must be mounted individually when the terminal pitch is larger than 6.2 mm.

Cross-reference table

Terminal markers

B

ABB-Stotz/
Entrelec

	MF-W 9/4	MF-W 9/5	MF-W 9/5 F	MF-W 9/6	MF-W 9/6.2 F	MF-W 5/5 mini	MF 10/5	MF 10/6	MF 10/8	MF 10/10		MF-W 9/4	MF-W 9/5	MF-W 9/5 F	MF-W 9/6	MF-W 9/6.2 F	MF-W 5/5 mini	MF 10/5	MF 10/6	MF 10/8	MF 10/10			
131 ET TM4...																								
165 LT TM5...																								
41 H LT...																								
62 H...				x																				
BADH				x																				
BADL				x	x			x																
BADRL				x	x	x		x																
BAEH				x																				
BAM...				x	x			x																
BAMH				x	x			x																
D 1,5/4...	x																							
D 1,5/6...					x																			
D 1,5/6...ADO...					x																			
D 1,5/8...ADO					x																			
D 1/5...ADO		x																						
D 10/10...						x																		
D 150/31...					x	x																		
D 16/12...								x																
D 2,5/5.P...		x	x																					
D 2,5/5...								x																
D 2,5/5...ADO		x																						
D 2,5/6...																								
D 2,5/8...								x																
D 2,5/8...ADO...								x																
D 240/36...						x	x																	
D 35/16...								x																
D 4/6.P...						x	x			x														
D 4/6...										x														
D 4/6...ADO		x																						
D 4/6...ADO						x																		
D 4/8...						x																		
D 4/8...ADO...						x																		
D 6/10...						x	x			x	x	x												
D 6/8.P						x	x			x														
D 6/8.ST...						x	x			x														
D 6/8...																								
D 6/8...ADO...										x														
D 70/22...						x	x																	
DB 1,5/6...										x														
DB 1/5...										x														
DB 2,5/5...										x														
DB 2,5/8...										x														
DB 4/6...										x														
DB 4/8...										x														
DF 6										x														
DH 1,5/6...										x														
DH 1/5...										x														
DH 2,5/5...										x														
DH 2,5/8...										x														
DH 4/6...										x														
DH 4/8...										x														
DL 10/17,5...										x														
DR 1,5/4...	x																							
DR 1,5/5...										x														
DR 1,5/6...										x														
DR 1/5...										x														
DR 2,5/10...										x														
DR 2,5/5...										x														

Wieland

	MF 8/5	MF 10/5	MF 12/5	MF 10/6		MF 8/5	MF 10/5	MF 12/5	MF 10/6	
9700 A/5...	X	X	X							
9700 A/6...				X						
9700 A/8...				X						
9700 A/10...				X						
9700 A/12...				X						
9700 A/16...				X						
9700 B...				X						
9701 A/6...A/16				X						
9708/2 ...				X						
9760 U...				X						
9785 U...				X						
9786 U...										X
AKB...						X	X	X		
AKT...						X	X	X		
flare Move ... (6,2mm)										X
Terminal adapter revos Basic						X	X	X		
Terminal adapter revos HD						X	X	X		
Terminal adapter revos Power						X	X	X		
RV2../...						X	X	X		
UET...						X	X	X		
WEB...						X	X	X		
WEF 1...										X

Individual mounting is required if the terminal pitch is larger than the marker.

Wieland

	MF 8/5	MF 10/5	MF 12/5	MF 10/6
WEG...	X	X	X	
WK 2,5...	X	X	X	
WK 2,5-4 KI...	X	X	X	
WK 2,5-4 KOI...	X	X	X	
WK 2,5-3 D...	X	X	X	
WK 2,5 U/D...	X	X	X	
WK 4...				X
WK 4 D...				X
WK 4 E...				X
WK 4/SI-D...			X	
WK 4 TK...				X
WK 4 THSI ...				X
WK 6...				X
WK 10/SI...				X
WKC 1 ...	X	X		
WKC 2,5 ...				X
WKC 1 TKG...	X	X		
WKC 2,5 TKG...				X
WKN 10...				X
WKN 16...				X
WKN 2,5 E...	X	X	X	
WKN 35...				X
WKN 4 ...				X
WKN 70...				X
WK/3-6...				X
WK/4-8...				X
WKB 2,5...	X	X	X	
WKF 1,5 E...	X	X	X	
WKF 1,5 KOI...	X	X	X	
WKF 10...				X
WKF 16...				X
WKF 35...				X
WKF 2,5...	X	X	X	
WKF 2,5 D...	X	X	X	
WKF 2,5/M...	X	X	X	
WKF 4...				X
WKF 4 TK...				X
WKF 6...				X
WKFN 2,5...	X	X	X	
WKFN 2,5 E...	X	X	X	
WKFN 4...				X
WKFN 4 E...				X
WKI 10...				X
WKI 16...				X
WKI 35...				X
WKI 4...				X
WKIF 2,5 ...	X	X	X	
WKM 2,5...	X	X	X	
WKMF 2,5../1,5	X	X	X	
WKM 4...				X

Cabur

	MF 10/5 Cabur	MF 12/5 Cabur
AFO.2...	X	X
CAM...	X	X
CBC.2... - CBC.35...	X	X
CBD.2... - CBD.70...	X	X
CBE.2...	X	
CBR.2...	X	X
CNT.16...	X	X
CNT.35...	X	X
CNT.6...	X	X
CVF.4...	X	X
DAS.4...	X	X
DBC.2...	X	
DSFA.4	X	
DSS.4...	X	
FDP.2...	X	X
FFS.4...	X	X
FPC.10...	X	X
FPL.10...	X	X
FVS.4...	X	X
MAC.6...	X	X
MPFA.4...	X	
MPS.2...	X	X
MPS.4...	X	X
NCS...	X	X
NCV...	X	X
PDF.2...	X	X
RFI.2...	X	
RN.2...	X	
RP.4...	X	
SCB.4...	X	X
SCB.6...	X	X
SFO.4...	X	X
SFR.4...	X	X
SFR.6...	X	X
TC/PO...	X	X
TDE.2...	X	X
TE.10...	X	X
TE.16...	X	X
TE.50...	X	X
TE.6...	X	X
TEC.10...	X	X
TEC.16...	X	X
TEC.35...	X	X
TEC.6...	X	X
TEC.70...	X	X
TED.4...	X	X
TEO.2...	X	X
TEO.4...	X	X
TLD.2...	X	X
TLE.2	X	X
TLS.2...	X	X
TR.2...	X	
TR.4...	X	X
VPC.2...	X	X

Individual mounting is required if the terminal pitch is larger than the marker.

Cross-reference table

Terminal markers

B

Siemens

	MF-SI 8/5	MF-SI 10/5	MF-SI 8/6	MF-SI 10/6	MF-SI 7/5-6,5	MF-SI 10/5-6,5	MF 5/4	MF 5/5	MF 8/5	MF 10/5	MF 12/5	MF 5/6	MF 10/6	MF 10/8	MF 10/10
8WA1 011-0DG...															
8WA1 011-1BF...	x	x													
8WA1 011-1BG...			x	x											
8WA1 011-1BH...			x	x											
8WA1 011-1BK...			x	x											
8WA1 011-1BM...			x	x											
8WA1 011-1BP...			x	x											
8WA1 011-1DF...	x	x													
8WA1 011-1DG...			x	x											
8WA1 011-1DH...			x	x											
8WA1 011-1EE...			x	x											
8WA1 011-1EF...	x	x													
8WA1 011-1MH...			x	x											
8WA1 011-1NF...	x	x													
8WA1 011-1NG...			x	x											
8WA1 011-1NH...			x	x											
8WA1 011-1PF...	x	x													
8WA1 011-1PG...			x	x											
8WA1 011-1PH...			x	x											
8WA1 011-1PK...			x	x											
8WA1 011-1PM...			x	x											
8WA1 011-1SF...			x	x											
8WA1 011-2BG11					x	x									
8WA1 011-2DG11					x	x									
8WA1 011-3DF...	x	x													
8WA1 011-3DG...			x	x											
8WA1 011-3DH...			x	x											
8WA1 011-3JF...	x	x													
8WA1 011-6BG11					x	x									
8WA1 011-6DG11					x	x									
8WA1 011-6EG...					x	x									
8WA1 204			x	x											
8WA1 205			x	x											
8WA1 206			x	x											
8WA1 221	x	x													
8WA1 232			x	x											
8WA1 304			x	x											
8WA1 305			x	x											
8WA1 501	x	x													
8WA1 604			x	x											
8WA2 011-...NK23			x	x											
8WA2 011-1BF...	x	x													
8WA2 011-1BG...			x	x											
8WA2 011-1BH...			x	x											
8WA2 011-1BJ...			x	x											
8WA2 011-1BK...			x	x											
8WA2 011-1DF...	x	x													
8WA2 011-1DG...			x	x											
8WA2 011-1DH...			x	x											
8WA2 011-1DJ...			x	x											
8WA2 011-1DK...			x	x											
8WA2 011-1EF20	x	x													
8WA2 011-1LF20	x	x													
8WA2 011-1NG23			x	x											
8WA2 011-1NH23			x	x											
8WA2 011-1PF...	x	x													
8WA2 011-1PG...			x	x											
8WA2 011-1PH...			x	x											
8WA2 011-1PJ...			x	x											
8WA2 011-1PK...			x	x											
8WA2 011-1SG...			?	?											
8WA2 011-2BG...			x	x											
8WA2 011-2DG...			x	x											
8WA2 011-3JG...			x	x											
8WA2 011-3JH23			x	x											
8WA2 011-3KE	x	x													
8WA2 011-6EG...			x	x											
8WA9 200			x	x											
8WH1 000-0AN...					x	x									
8WH1 000-0AQ...					x	x									
8WH1 000-0AS...					x	x									
8WH1 000-0AU...					x	x									
8WH1 000-0CN...					x	x									
8WH1 000-0CQ...					x	x									
8WH1 001-0...K...															x
8WH1 001-0...M...															x
8WH1 001-0BJ...															x
8WH1 001-0BJ...															x

Individual mounting is required if the terminal pitch is larger than the marker.

Siemens

	MF-SI 8/5	MF-SI 10/5	MF-SI 8/6	MF-SI 10/6	MF-SI 7/5-6,5	MF-SI 10/5-6,5	MF 5/4	MF 5/5	MF 8/5	MF 10/5	MF 12/5	MF 5/6	MF 10/6	MF 10/8	MF 10/10
8WH1 001-0BJ...															
8WH1 060-0A...00					x	x									
8WH1 070-0A...					x	x									
8WH2 ...-6AF...								x	x	x					
8WH2 ...-6AG...												x	x		
8WH2 ...-6CF...								x	x	x					
8WH2 ...-6CG...												x	x		
8WH2 00...-0AE...							x								
8WH2 00...-0AF...								x	x	x					
8WH2 00...-0AG...												x	x		
8WH2 00...-0CE...							x								
8WH2 00...-0CF...								x	x	x					
8WH2 00...-0CG...												x	x		
8WH2 00...-0AH...															x
8WH2 00...-0AJ...															x
8WH2 00...-0AK...															x
8WH2 00...-0AM...															x
8WH2 00...-0CH...															x
8WH2 000-1AG...															x
8WH2 000-1BG...															x
8WH2 000-1GG...												x	x		
8WH2 000-1HG...															x
8WH2 000-1JG...												x	x		
8WH2 000-1MG...												x	x		
8WH2 000-1NG...															x
8WH2 000-1RG...															x
8WH2 003-5...F...								x	x						
8WH2 02...-0AE...							x								
8WH2 02...-0AF...								x	x						
8WH2 02...-0AG...												x	x		
8WH2 02...-0CE...							x								
8WH2 02...-0CF...								x	x						
8WH2 02...-0CG...												x	x		
8WH2 02...-4...F...								x	x						
8WH2 020-5...F...								x	x						
8WH2 03...-0...F...								x	x						
8WH2 04...-0...F...								x	x						
8WH2 040-4L...								x	x						
8WH2 103...BF...								x	x	x					
8WH2 103...BG...												x	x		
8WH2 50...-0...F...								x	x						
8WH2 50...-0...G...												x	x		
8WH2 50...-0...H...															x
8WH2 50...-6...F...								x	x						
8WH2 520-0...F...								x	x						
8WH2 520-0...G...												x	x		
8WH3 00...-0...E...								x	x	x					
8WH3 00...-0...F...												x	x		
8WH3 000-6AE...								x	x	x					
8WH3 000-6AF...												x	x		
8WH3 000-6CF...												x	x		
8WH3 020...E...								x							
8WH3 1...-2...E...								x	x	x					
8WH3 1...-2...F...												x	x		
8WH3 1...-3...E...								x	x	x					
8WH3 1...-3...F...												x	x		
8WH4 00...-0...F...								x	x	x					
8WH4 00...-0...G...												x	x		
8WH4 00...-0...H...															x
8WH4 001...F...									x	x					
8WH5 00...-0...F...								x	x	x					
8WH5 10...F...								x	x	x					
8WH5 100...KG...												x	x		
8WH5 103-6...F...								x	x	x					
8WH5 12...MF...								x							
8WH9 040-1AB...								x							
8WH9 040-1BB...								x							
8WH9 040-1CB...								x							
8WH9 040-1DB...								x							
8WH9 040-1EB...								x							
8WH9 040-1FB...								x							
8WH9 050-0AB...															
8WH9 050-0LB...								x							
8WH9 050-1KB...												x			
8WH9 050-1LB...												x			
8WH9 050-1MB...												x			
8WH9 150-OCA00					x	x									

Beckhoff

	MF-W 5/5 mini	ESG 8/11	MF 5/10
I/O modules	x	x	x

Adels

	MF 5/7,5
RKV Transformer terminal	x

Individual mounting is required if the terminal pitch is larger than the marker.

Cross-reference table

Terminal markers

B

Allen-Bradley

	MF-WO 5/5	MF-WO 9/5	MF-WO 12/5	MF-WO 9/6	MF-WO 12/6	DEK 5/3,5	DEK 5/5	DEK 5/6	DEK 5/8	WS 12/3,5	WS 8/5	WS 10/5	WS 10/5 m.	WS 12/5	WS 15/5	WS 10/6	WS 10/6 m.	WS 12/6	WS 12/6,5	WS 12/6,5	ZS 10/5	ZS 12/6	ZS 15/5
1492-J10...							X													X			
1492-J16...							X													X			
1492-J2Q...							X							X									
1492-J3...							X							X									
1492-J35...							X													X			
1492-J3F...							X							X									
1492-J3P...							X							X									
1492-J3PTP...							X							X									
1492-J3TW...							X							X									
1492-J4...								X											X				
1492-J4M...								X										X					
1492-J50...							X													X			
1492-J6...									X											X			
1492-J70...							X													X			
1492-JC3...							X							X									
1492-JD3...							X																
1492-JD3C...							X							X									
1492-JD3DF...							X							X									
1492-JD3DR...							X							X									
1492-JD3F...							X							X									
1492-JD3P...							X							X									
1492-JD3PSS...							X							X									
1492-JD3PSSTP							X							X									
1492-JD3PTP...							X							X									
1492-JD3RB...							X							X									
1492-JD3RC001							X							X									
1492-JD3SS...							X							X									
1492-JDC3...							X																
1492-JDG3...							X																
1492-JDG3C...							X																
1492-JDG3P...							X							X									
1492-JDG3PSS...							X							X									
1492-JDG3PSSTP							X							X									
1492-JDG3PTP...							X							X									
1492-JG10...									X											X			
1492-JG16...									X											X			
1492-JG2Q...							X							X									
1492-JG3...							X							X									
1492-JG35...									X											X			
1492-JG3TW...							X							X									
1492-JG4...								X											X				
1492-JG50...									X											X			
1492-JG6...									X											X			
1492-JG70...									X											X			
1492-JKD3...							X							X									
1492-JKD3TP...							X							X									
1492-JPO...								X											X				
1492-JTC3...							X							X									
1492-K2...														X									
1492-K3...																			X				
1492-KG2...														X									
1492-KG3...																			X				
1492-KW2...														X									
1492-KW3...																			X				
1492-L10...									X										X				X
1492-L16...									X										X				X
1492-L16D...									X										X				X
1492-L2...							X			X													
1492-L2Q...							X			X													
1492-L2T...							X			X													
1492-L3...							X						X									X	
1492-L35...									X											X			X
1492-L3P...							X						X										
1492-L3Q...							X						X									X	
1492-L3QS...							X						X										
1492-L3T...							X						X									X	
1492-L4...								X								X							X
1492-L4Q...								X								X							X
1492-L4T...								X								X							X
1492-L6...									X										X				X
1492-L6T...									X										X				X
1492-LC3...							X						X										
1492-LD2...							X			X													
1492-LD2C...							X			X													
1492-LD3...							X						X										
1492-LD3C...							X						X										
1492-LD4...								X												X			
1492-LD4C...								X												X			

The markers must be mounted individually when the terminal pitch is larger than 6 mm.

Allen-Bradley

	MF-WO 5/5	MF-WO 9/5	MF-WO 12/5	MF-WO 9/6	MF-WO 12/6	DEK 5/3,5	DEK 5/5	DEK 5/6	DEK 5/8	WS 12/3,5	WS 8/5	WS 10/5	WS 10/5 m.	WS 12/5	WS 15/5	WS 10/6	WS 10/6 m.	WS 12/6	WS 12/6,5	WS 12/6,5	ZS 10/5	ZS 12/6	ZS 15/5
1492-LD4DF...								X								X							
1492-LD4DR...								X								X							
1492-LD4RB...								X								X							
1492-LD4SS...								X								X							
1492-LDAG3...							X				X												
1492-LDC3...							X				X												
1492-LDG2...						X				X													
1492-LDG3...							X					X											
1492-LDG3P...							X					X											
1492-LDG4...								X								X							
1492-LG10...									X									X					X
1492-LG16...									X									X					X
1492-LG2...						X				X										X			
1492-LG3...							X					X											X
1492-LG35...									X														X
1492-LG4...								X								X				X			X
1492-LG6...									X									X					X
1492-LKD3...							X					X											
1492-LM3...							X					X										X	
1492-LM3Q...							X					X										X	
1492-LMG3...							X					X										X	
1492-LMJ3...							X						X									X	
1492-LMJG3...							X						X									X	
1492-LMP3...							X					X										X	
1492-LMP3Q...							X					X										X	
1492-LS...							X																
1492-LTF3...							X						X										
1492-W16S...					X																		
1492-W3...			X																				
1492-W4...				X																			
1492-W4TW...				X																			
1492-W6...					X																		
1492-WFB4			X	X																			
1492-WG10S...					X																		
1492-WG16S...					X																		
1492-WG4...					X																		
1492-WG6...					X																		
1492-WM3...	X																						
1492-WM4...				X																			
1492-WMD...	X																						
1492-WMG...				X																			
1492-WR3...		X																					
1492-WTF3...		X																					
1492-WTS3...		X																					

Télemecanique

	MF 8/5	MF 10/5	MF 12/5	MF 10/6		MF 8/5	MF 10/5	MF 12/5	MF 10/6
AB1 AA135U...	X	X	X						
AB1 AA235U...				X					X
AB1 AATP135U...	X	X	X						
AB1 AATP235U...					X				
AB1 AASC...					X				
AB1 AASF...					X				
AB1 AAET135UGR	X	X	X						
AB1 AAET235...				X					
AB1 RR235U...	X	X	X						
AB1 RR435U...					X				
AB1 RR635U2					X				
AB1 RR1035U2					X				
AB1 RR1635U2					X				
AB1 RRTP235U...	X	X	X						
AB1 RRTP435U...					X				
AB1 RRTP635U2					X				
AB1 RRTP1035U2					X				
AB1 RRTP1635U2					X				
AB1 RRSC435UGR					X				
AB1 RRSF435U					X				
AB1 RRET...	X	X	X						
AB1 VV235U	X	X	X						
AB1 VV435U									X
AB1 VV635U									X
AB1 VVN...									X
AB1 TP...									X
AB1 SC435U									X
AB1 FUSE435U									X
AB1 SF435U									X
AB1 D11435U									X
AB1 F...									X
AB1 E...									X
AB1 D...									X
AB1 TR...									X
AB1 NEN...									X
AB1 BB...									X
AB1 BC...									X
AB1 VV215		X	X	X					
AB1 VV415									X
AB1 TP215									X
AB1 BV10235U									X
AB1 DV10235U									X
AB1 BCP20235U									X

The markers must be mounted individually when the terminal pitch is larger than 6 mm.

Cross-reference table

Terminal markers

B

Woertz

	MF-WO 5/5	MF-WO 9/5	MF-WO 12/5	MF-WO 9/6	MF-WO 12/6		MF-WO 5/5	MF-WO 9/5	MF-WO 12/5	MF-WO 9/6	MF-WO 12/6		MF 8/5	MF 10/5	MF 10/6
2711...	X					30973...		X				393 03			X
2759...	X					45124...	X					393 04			X
2760...	X					45136...	X					393 05			X
3410...					X	45140...	X					393 07			X
3424...					X	45148...	X					393 60	X	X	
3426...					X	45156...	X					393 61			X
3427...					X	45163...	X					393 62			X
3428...					X	45165...	X					393 64			X
3429...					X	45170...	X					393 66			X
3430...				X		45179...	X					393 68			X
3436/4...					X	45200...	X					393 70			X
3436...					X	45217...	X					393 71	X	X	
3436/10...					X	45218...	X					393 72			X
3437...					X	45219...	X					393 73			X
3438...					X	45220...	X					393 74			X
3440...					X	45235...	X					393 76			X
3450...					X	45305T...	X					393 78			X
3452...					X	45306T...	X					393 81			X
3452/10...					X	45307T...	X					393 82			X
3452/16...					X	45308T...	X					394 00			X
3472...					X	45309T...	X					394 02			X
3473...					X	45310T...	X					396 01	X	X	
3477...					X	45311T...	X					396 02	X	X	
30003...					X	45312T...	X					396 03	X	X	
30005...					X	45313T...	X					396 04			X
30008...					X	45314T...	X					396 11	X	X	
30009...					X	45315T...	X					396 12	X	X	
30041...					X	45316T...	X					396 13	X	X	
30123...					X	45323T...	X					396 14			X
30124...					X	45329T...	X					396 21	X	X	
30125...					X	45372T...	X					396 24			X
30127...					X	45373T...	X					396 23	X	X	
30128...					X	45374T...	X								
30130...					X	45375T...	X								
30137...					X	45376T...	X								
30138...					X	45377T...	X								
30143...					X	45378T...	X								
30146...					X	45385T...	X								
30150...		X				45387T...	X								
30168...					X	45388T...	X								
30172...					X	45389T...	X								
30176...					X	45393T...	X								
30191...					X	45394T...	X								
30195...					X	45441T...	X								
30197...					X	45442T...	X								
30200...					X	45443T...	X								
30228...					X	45444T...	X								
30290...					X	45445T...	X								
30291...					X										
30400...	X														
30403...	X														
30430...				X											
30431...				X											
30432...				X											
30544/4...					X										
30544/6...					X										
30544/10...					X										
30544/16...					X										
30550...					X										
30800...					X										
30810...		X				390 60									
30840...					X	390 61									X
30841...					X	390 62									X
30842...					X	390 64									X
30843...					X	390 66									X
30844...					X	390 68									X
30860...		X				390 70									X
30870...		X				390 77		X	X						X
30880...		X				390 78									X
30890...				X		390 76									X
30891...				X		390 80									X
30902...				X		390 81									X
30903...		X				390 84									X
30904...				X		390 85									X
30930...				X		390 86									X
30950...				X		393 00		X	X						X
30951...				X		393 01									X
30952...				X		393 02									X

Legrand

	MF 8/5	MF 10/5	MF 10/6
390 60	X	X	
390 61			X
390 62			X
390 64			X
390 66			X
390 68			X
390 70			X
390 77	X	X	
390 78			X
390 76			X
390 80			X
390 81			X
390 84			X
390 85			X
390 86			X
393 00	X	X	
393 01			X
393 02			X

Festo

	MFF 10/6	MFF 9/4	ESG 10/17	ESG 9/20	ESG-M 8/20	ESG-M 9/17
CPE	X					
MZBH	X					
MOZBH	X					
MEBH	X					
MOEBH	X					
JMN2H, MN2H						X
JMN2H, MN1H				X		
JMT2H/MT2H-...-4,0				X		
JMT2H, MT2H-...-7,0			X			
MVH, MOVH, MDH, MODH				X		
MHA1, MHP1		X				
CPV10/14	X					
CPV18				X		
CP-E16	X					
CP-A08	X					
MV-BZ Typ 02				X		
KMYZ	X					
Pneumatic elements and valve clusters					X	

Murr

	ESG-M 9/17	ESG-M 8/20	ESG 9/20	MF 10/5	MF 12/5
MASI	X				
MVP	X				
Cube67		X			
M8 distributor				X	
MVK		X			
Optocoupler					X
Miro-Series					X

Terminal marker WAD

- Top-quality and resistant printing with PrintJet printer
- WAD marker and cover for the terminals of the W-series and end brackets WEW 35/2 and ZEW 35/2
- Available as neutral marker, custom printing or with lightning flash
- Fast and easy assembling



The WAD-type markers can be printed by PrintJet printer. Colour printing with the PrintJet PRO, in particular, enables terminal strips to be labeled in a variety of noticeable manners.



Technical data

Material	Polyamide PA 66
Temperature range	-40° ... +100 °C
Flammability rating	V2 according to UL 94
Suitable for	Feed-through terminal WDU 2.5, WDU 4, WDU 6 and WDU 10 End bracket WEW 35/2 and ZEW 35/2
Printable with	PrintJet and PrintJet PRO
Not printable with	SMark Laser and Plotter

Ordering data

Type	Colour	Qty.	Order No.
WAD 5 MC NE WS	white	48	1112910000
WAD 5 MC NE GE	yellow	48	1112920000
WAD 8 MC NE WS	white	48	1112940000
WAD 8 MC NE GE	yellow	48	1112950000
With lightning flash			
WAD 5 MC B GE/SW	yellow	48	1120450000
WAD 8 MC B GE/SW	yellow	48	1120470000
Custom printing			
WAD 5 MC SDR		12	1112930000
WAD 8 MC SDR		12	1112970000



Snap Mark

Technical specification

Material	Polyamide 66
UL 94 flammability rating	V2
Min. temperature, continuous	-40 °C
Max. temperature, continuous	100 °C
Material colour	white

Accessories

This tag holder is specially conceived for the IDK 1.5N two-tier terminal of the I-series. The flexible hinge mechanism allows cross-connections to be connected or disconnected at little effort. It can be fitted with four DEK 5 tags or two WS 10/5 Middle connector markers.

Ordering data

Type	Length	Width	Qty	Order No.
Snap Mark I	23 mm	5 mm	50	1805880000

Type	Length	Width	Qty	Order No.
DEK 5/5 MC	5 mm	5 mm	1000	1609801044
WS 10/5 MC middle	10 mm	5 mm	720	1792000000



BZT1 / BZT2

Technical specification

Material	Polyamide
UL 94 flammability rating	V2
Min. temperature, continuous	-40 °C
Max. temperature, continuous	100 °C
Material colour	beige

Accessories

The BZT tag carrier makes possible the clear labelling of the ZDU 2.5/4/6 and ZDUA terminal families. The BZT is used with the WS 10/5 terminal markers. By creating blocks of tag carriers, the ZA version offers the maximum stability.

Ordering data

Type	Length	Width	Qty	Order No.
BZT 1	8 mm	5 mm	100	1805490000
BZT 1 ZA	8 mm	5 mm	100	1805520000
BZT 2	12 mm	5 mm	100	1805480000
BZT 2 ZA	12 mm	5 mm	100	1805530000

Type	Length	Width	Qty	Order No.
WS 10/5 MC	10 mm	5 mm	720	1635000000

Tag carrier



SchT 5 / SchT 5 S

Technical specification

Material	Polyamide 66
UL 94 flammability rating	V2
Min. temperature, continuous	-40 °C
Max. temperature, continuous	100 °C
Material colour	beige

The SCHT 5 & SCHT 5 S group marker carrier is clipped directly to the TS 32 DIN rail (G-rail) or the TS 35 DIN rail (top-hat rail). It is therefore possible to provide terminal strip labelling irrespective of the terminal and the type of terminal.

Ordering data

Type	Length	Width	Qty	Order No.
SCHT 5	44.5 mm	19.5 mm	20	0292460000
SCHT 5 S	44.5 mm	9.5 mm	20	1631930000

Accessories

Type	Length	Width	No. per sheet	Qty	Order No.
ESO 5 white	40 mm	16.5 mm	60	10	1607710000
ESO 5 yellow	40 mm	16.5 mm	60	10	1631350000
ESO 5P white	40 mm	16.5 mm	60	10	1670370000
ESO 5P yellow	40 mm	16.5 mm	60	10	1670380000
ESO 5 S white	40 mm	7 mm	140	10	1631920000
STR 5 F.SCHT 5	40 mm	16.5 mm	20	20	0294000000
STR 5 S. F.SCHT 5 S	40 mm	7 mm	20	20	1631940000
ELS 7/40 MC NE GE				40	1045650000
ELS 7/40 MC NE WS				40	1045640000
ELS 16/40 MC NE GE				40	1045630000
ELS 16/40 MC NE WS				40	1045620000



SCHT 7

Technical specification

Material	Polyamide 66
UL 94 flammability rating	V2
Min. temperature, continuous	-40 °C
Max. temperature, continuous	100 °C
Material colour	white

The SCHT 7 is a hinged group marker carrier for inlay tags which still allows easy access to the clamping screw. To equip with ESO 7, 4 tags of DEK 5/5 or 2 tags of WS 10/5 Middle.

Ordering data

Type	Length	Width	Qty	Order No.
SCHT 7	39.3 mm	8 mm	20	0517960000

Accessories

Type	Length	Width	No. per sheet	Qty	Order No.
DEK 5/5 MC	5 mm	5 mm		1000	1609801044
ESO 7 white	27 mm	6.3 mm	240	10	1607720000
ESO 7 yellow	27 mm	6.3 mm	240	10	1634780000
ESO 7P white	27 mm	6.3 mm	240	10	1670390000
ESO 7P yellow	27 mm	6.3 mm	240	10	1670400000
STR 7 SCHT 7	27 mm	6.3 mm	20	20	0515300000
WS 10/5 MC middle	10 mm	5 mm		720	1792000000



SCHT 9/4 / SCHT 14/6

Technical specification

Material	Polyamide 66
UL 94 flammability rating	V2
Min. temperature, continuous	-40 °C
Max. temperature, continuous	100 °C
Material colour	beige

Accessories

SchT 9/4 and SchT 14/6 are hinged group tag holders for single dekafix and WS tags, allowing easy access to the clamping screws.

Ordering data

Type	Length	Width	Qty	Order No.
SCHT 14/6	44.3 mm	6 mm	20	1269060000
SCHT 9/4	32 mm	4 mm	20	1278460000

Type	Length	Width	Qty	Order No.
DEK 5/5 MC	5 mm	5 mm	1000	1609801044
WS 12/5 MC	12 mm	5 mm	720	1609860000



ELS insertion tag

Technical specification

Material	Polyamide PA 66
UL 94 flammability rating	V2
Min. temperature, continuous	-40 °C
Max. temperature, continuous	100 °C
Suitable for	ELS 6/30: WKM 8/30 (1631910000) and EM 8/30 (1806120000) ELS 7/40 : SchT5S (1631930000) ELS 16/40: SchT5 (0292460000) and WKM 18/43 (1610700000)

The ELS-type MultiCard marker can be printed on with PrintJet, plotter or SMark printer. Colour printing with the PrintJet PRO, in particular, enables cables and terminal strips to be labelled in a variety of noticeable manners.



Ordering data

Type	Colour	Qty.	Order No.
blank			
ELS 6/30 MC NE WS	white	80	1045570000
ELS 6/30 MC NE GE	yellow	80	1045580000
ELS 7/40 MC NE WS	white	40	1045640000
ELS 7/40 MC NE GE	yellow	40	1045650000
ELS 16/40 MC NE WS	white	40	1045620000
ELS 16/40 MC NE GE	yellow	40	1045630000
Custom printing			
ELS 6/30 MC SDR		16	1045660000
ELS 7/40 MC SDR		8	1045700000
ELS 16/40 MC SDR		8	1045690000

Tag carrier



EM 8/30

Technical specification

Material	Polypropylene
UL 94 flammability rating	HB
Min. temperature, continuous	-40 °C
Max. temperature, continuous	80 °C
Material colour	transparent

The EM 8/30 end bracket marker is suitable for labelling the WEW 35/2 and ZEW 35/2 end brackets as well as marker carrier for W-series terminals. The EM 8/30 can be fitted with the ESO 7 and ESO 7P inlay tags. The pocket guarantees that the labelling is well protected against environmental influences.

Ordering data

Type	Length	Width	Qty	Order No.
EM 8/30	30 mm	8 mm	50	1806120000

Accessories

Type	Length	Width	No. per sheet	Qty	Order No.
ESO 7 white	27 mm	6.3 mm	240	10	1607720000
ESO 7 yellow	27 mm	6.3 mm	240	10	1634780000
ESO 7P white	27 mm	6.3 mm	240	10	1670390000
ESO 7P yellow	27 mm	6.3 mm	240	10	1670400000



WGB 5 / WGB 8 / WAD

Technical specification

Material	Polyamide 66
UL 94 flammability rating	V2
Min. temperature, continuous	-40 °C
Max. temperature, continuous	100 °C

WGB group marker carrier for single dekafix and WS tags. The WGB also covers the cross-connection channels.

Blank WAD covers for labelling with STI pen, or a special printing for the W-series. Cross-connection channels are covered. Also available with lightning flash warning symbol to DIN 30600 (see page B.34).

Ordering data

Type	Length	Width	Material colour	Qty	Order No.
WGB 5	33.5 mm	5 mm	beige	50	1050760000
WGB 8	33.5 mm	7.7 mm	beige	50	1050960000
WAD 5	33.5 mm	5 mm	white	50	1056060000
WAD 5 lightning flash	33.5 mm	5 mm	yellow	50	1053460000
WAD 8	33.5 mm	8 mm	white	50	1056160000
WAD 8 lightning flash	33.5 mm	8 mm	yellow	50	1053560000
WAD 12	36.2 mm	12 mm	white	50	1056260000
WAD 12 lightning flash	36.2 mm	12 mm	yellow	50	1055960000
WAD 27	64 mm	27 mm	white	10	1062960000
WAD 27 lightning flash	64 mm	27 mm	yellow	10	1062860000

WAD Custom printing

Type	Length	Width	Material colour	Qty	Order No.
WAD 5	33.5 mm	5 mm	white	100	1790060000
WAD 8	33.5 mm	8 mm	white	50	1667700000

Accessories – WGB 5 / WGB 8

Type	Length	Width	Qty	Order No.
DEK 5/5 MC	5 mm	5 mm	1000	1609801044
DEK 5/30 MC	30 mm	5 mm	100	1951920000
DEK 5/30 MC SDR	5 mm	30 mm	40	1025680000
WS 12/5 MC	12 mm	5 mm	720	1609860000



ZGB 15 / ZGB 30

Technical specification

Material	Polyamide 66
UL 94 flammability rating	V2
Min. temperature, continuous	-40 °C
Max. temperature, continuous	100 °C
Material colour	white

Accessories

The ZGB 15 / ZGB 30 is a hinged marker carrier. The tag holder can be fitted with the dekafix 5, WS 12/5 connector markers or with the push-in tag ESO 15 / ESO 7.

Ordering data

Type	Length	Width	Qty	Order No.
ZGB 15	15 mm	7 mm	20	1636530000
ZGB 30	32 mm	7 mm	20	1611930000

Type	Length	Width	No. per sheet	Qty	Order No.
DEK 5/5 MC	5 mm	5 mm		1000	1609801044
DEK 5/30	30 mm	5 mm		100	1951920000
DEK 5/30 SDR	30 mm	5 mm		40	1025680000
ESO 7 white	27 mm	6.3 mm	240	10	1607720000
ESO 7 yellow	27 mm	6.3 mm	240	10	1634780000
ESO 7P white	27 mm	6.3 mm	240	10	1670390000
ESO 7P yellow	27 mm	6.3 mm	240	10	1670400000
ESO 15 white	15 mm	6 mm	120	1	1636510000
STR 7 SCHAT 7	27 mm	6.3 mm	20	20	0515300000
STR 15 ZGB 15	15 mm	6.3 mm	20	20	1636520000
WS 12/5 MC	12 mm	5 mm		720	1609860000

